

Product No: TIS63M100

**IPD FUSE LINK MOTOR RATED 100A 690VAC OFF-SET TAG
73mm FIXING 80kA A3, 400309 TIS63M100**

FEATURES

- Fault levels up to 80kA (AC)
- Low power dissipation values
- Superior withstand to motor starting surges



General Information

Brand	IPD
Pack Quantity	10
Product Type	Bolt-In

Technical Attributes

Breaking Capacity AC (kA)	80
Breaking Capacity DC (kA)	40
Fuse Shape	Offset slotted bolted tags
Fuse Type	BS88/A3
Insulated Metal Gripping Lugs	No
Rated Current (A)	100
Rated Voltage AC (V)	690
Rated Voltage DC (V)	460
Suitable Fuse Holder	RS63/RSM
Utilisation Category	gM
Voltage Type	AC/DC

Physical Attributes

Maximum Ambient Temperature (°C)	40
----------------------------------	----

Dimensions

Body Diameter (mm)	26.2
--------------------	------

Fixing Centres (mm)

73

Protection & Standards

Standards

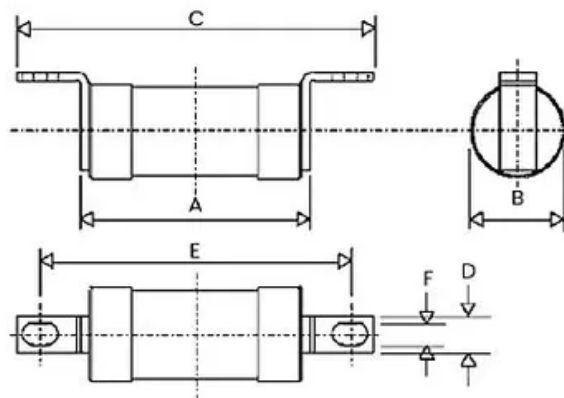
BS 88-2, AS 60269, IEC 269-2-1, ASTA20

Resources

Product catalogue (Flipbook)

[Download from here](#)

DIMENSIONS



Rated Current (A)	A	B	C	D	E	F
35 - 63	56.4	23.8	85.8	8.7	73	5.2
63M80, 63M100	58	26.2	90.5	12.7	73	5.2

All Dimensions are in "mm"