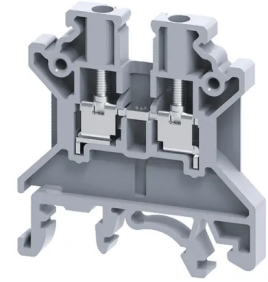


## Product No: CTS2.5UNY

### CONNECTWELL 2.5mm SCREW CLAMP 'YELLOW' TERMINAL BLOCK CTS2.5UNY

#### FEATURES

- Feed Through Terminal Blocks are the most Versatile terminals for control
- A specially designed flexible foot enables easy mounting and dismounting from the Din Rail with the help of a screw driver.
- These Terminal Blocks have marker holding recesses to accept marking tags for circuit identification
- Cross connection can be achieved with the aid of shorting links / sleeves & screws.



#### General Information

Brand	CONNECTWELL
Product Type	Screw Clamp

#### Technical Attributes

Mode of Operation	By Screwdriver
Rated Current (A)	24
Rated Voltage AC/DC (V)	1000
Surge Voltage (kV)	8
Tightening Torque (Nm)	0.4

#### Physical Attributes

Material	Polymaide (Housing)
----------	---------------------

#### Protection & Standards

Pollution Degree	3
------------------	---