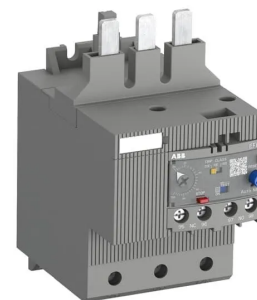


## Product No: EF65-56

### ABB EF65-56 ELECTRONIC OVERLOAD RELAY 20 ... 56 A EF65-56

#### FEATURES

- Operates without external power, ensuring self-supplied electronic overload protection
- High accuracy and a wide setting range for precise and adaptable protection
- User-friendly design
- Trip indication, temperature compensation, STOP and Test functions, trip-free mechanism



#### General Information

Brand	ABB
Product Type	Electronic Overload Relay
Suitable For	AF40 - AF65

#### Technical Attributes

Auxiliary Contacts	1NO/1NC
Current Setting Range (A)	20
Main Circuit Electrical Connection	Screw Connection
No. of Normally-closed Auxiliary Contacts	1
No. of Normally-open Auxiliary Contacts	1
No. of Poles	3
Power Loss (W)	0.036/pole
Rated Frequency (Hz)	50/60
Rated Impulse Withstand Voltage (kV)	8
Rated Insulation Voltage (V)	1000
Rated Operational Voltage AC (V)	1000
Release Class	Adjustable
Reset Function	Automatic
Short-Circuit Protective Device	160A, fuse type gG
Thermal Current Setting Range (A)	20 - 56
Trip Class	10E, 20E, 30E

### Physical Attributes

Mounting Type	Direct Attachment
---------------	-------------------

### Dimensions

Dimensions (mm)	70W x 131.2H x 105.2D
-----------------	-----------------------

### Protection & Standards

Degree of Protection	IP10 (Main Terminals), IP20 (Housing)
----------------------	---------------------------------------

Pollution Degree	3
------------------	---

### Resources

Product catalogue (Flipbook)	<a href="#">Download from here</a>
------------------------------	------------------------------------