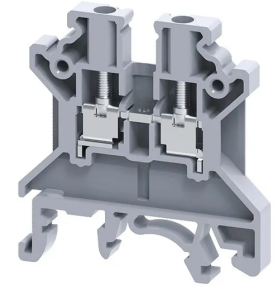


**Product No: CTS2.5UNBK****CONNECTWELL TERMINAL BLOCK SCREW CLAMP BLACK  
2.5mm<sup>2</sup> CTS2.5UNBK****General Information**

Brand	CONNECTWELL
Product Type	Screw Clamp

**Technical Attributes**

Function	Feed Through
Rated Current (A)	24
Rated Voltage (V)	1000
Tightening Torque (Nm)	0.4

**Physical Attributes**

Cable Entry	Side Entry
Colour	Black
Conductor Cross Section - Stranded (mm <sup>2</sup> )	0.2 - 2.5
Housing Material	Polyamide
Mounting Type	DIN rail
Screw Size	M2.5

**Dimensions**

Dimensions (mm)	43L X 5W X 46.2H
-----------------	------------------

**Protection & Standards**

Pollution Degree	3
------------------	---

## Resources

Product catalogue (Flipbook)

[Download from here](#)

---