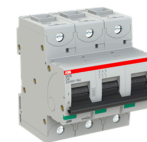


ABB S803BC40 HIGH PERF. MCB 16kA 3P 40A 400VAC C CURVE

S803BC40

FEATURES

- Protection against short circuit and thermal overload
- Interchangeable terminal, failsafe cage or ring lug terminal
- Laser printed data for quick identification
- Contact position indication
- Finger safety with IP20 terminals
- Pole configuration 3P



GENERAL INFORMATION

Brand	ABB
Product Type	MCB
Series	S800B

TECHNICAL ATTRIBUTES

Application	Commercial and Industrial
Breaking Capacity 400V AC - I _{cu} (kA)	16
Curve Type	C Curve
Maximum Operational Voltage AC (V)	440
Minimum Operational Voltage AC (V)	12
No. of Poles	3P
Power Loss (W)	3.7/Pole
Rated Conditional Short-Circuit Current - I _{nc} (kA)	16
Rated Current (A)	40
Rated Frequency (Hz)	50/60
Rated Impulse Withstand Voltage (kV)	6
Rated Insulation Voltage (V)	500
Rated Operational Voltage AC (V)	400
Rated Short-Circuit Capacity - I _{cn} (kA)	10
Rated Voltage AC (V)	400

PHYSICAL ATTRIBUTES

Housing Material	Insulation group I, RAL 7035
------------------	------------------------------

PHYSICAL ATTRIBUTES

Mounting Type	DIN Rail
---------------	----------

DIMENSIONS

Cable Cross Section - Flexible (mm ²)	Top/Bottom - 70/70
---	--------------------

Cable Cross Section - Solid/Stranded (mm ²)	Top/Bottom - 50/50
---	--------------------

Dimensions (mm)	95H x 82.5D x 81W
-----------------	-------------------

Pole Width (mm)	27
-----------------	----

PROTECTION & STANDARDS

Degree of Protection	IP20
----------------------	------

Pollution Degree	3
------------------	---

Standards and Approvals	AS/NZS 60898-1,AS/NZS 60947-2
-------------------------	-------------------------------

RESOURCES

Product catalogue (Flipbook)	Download from here
------------------------------	------------------------------------