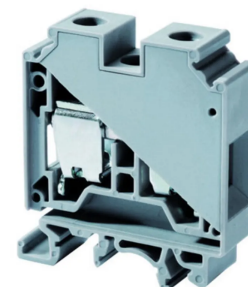


Product No: CTS35UN**CONNECTWELL CTS35UN STANDARD FEED THROUGH SCREW CLAMP TERMINAL BLOCK 4-35mm² 1000 V/125A****General Information**

Brand	CONNECTWELL
Product Type	Screw Clamp

Technical Attributes

Rated Current (A)	150
Rated Voltage (V)	1000

Physical Attributes

Colour	Grey
Conductor Cross Section - Stranded (mm ²)	4 - 35
Mounting Type	DIN Rail
Screw Size	M6

Dimensions

Dimensions (mm)	64.5L x 17W x 65H
-----------------	-------------------

Resources

Product catalogue (Flipbook)	Download from here
------------------------------	------------------------------------