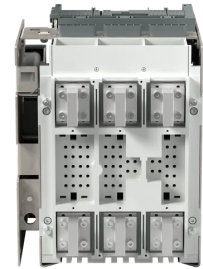


Product No: ISDA072116R1

ABB E1.2N 800 EKIP TOUCH LSIG 3P WMP ISDA072116R1



General Information

Brand	ABB
EAN	8015644759667
Product Type	Accessory
Suitable For	E1.2
Version	Withdrawable

Technical Attributes

Breaking Capacity 400V AC - I _{cu} (kA)	66
Current Type	AC
Design of Control Element	Push Button
Earth Fault Protection	Yes
Indication	Switched-off Indicator
Main Circuit Electrical Connection	Connection at Separate Chassis Part
Main Current Circuit Connection Position	Connection at Separate Chassis Part
No. of Auxiliary Change-over Contacts	4
No. of Poles	3
Overload Release Current Setting (A)	320
Power Loss (W)	100
Rated Current (A)	800
Rated Impulse Withstand Voltage (kV)	12
Rated Instantaneous Short-Circuit Current - I _i (A)	1200
Rated Insulation Voltage AC (V)	1000

Rated Short-time Withstand Current - I _{cw} (kA/1s)	50
Rated Short-time Withstand Current - I _{cw} (kA/3s)	30
Rated Uninterrupted Current - I _u (A)	800
Rated Voltage (V)	690
Rated Voltage AC (V)	690
Trip Unit	EKIP Touch LSIG

Dimensions

Dimensions (mm)	278W x 363.5H x 271D
-----------------	----------------------

Protection & Standards

Degree of Protection	IP30
----------------------	------

Resources

Product catalogue (Flipbook)	Download from here
------------------------------	------------------------------------