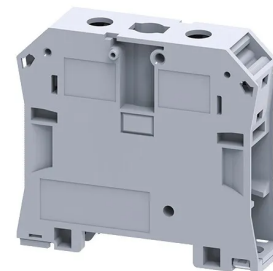


Product No: CTS50/70N

CONNECTWELL CTS50/70N STANDARD FEED THROUGH SCREW CLAMP TERMINAL BLOCK 10-70mm² 1000 V/192A



General Information

Brand	CONNECTWELL
Product Type	Screw Clamp

Technical Attributes

Rated Current (A)	192
Rated Voltage (V)	1000
Tightening Torque (Nm)	3

Physical Attributes

Colour	Grey
Conductor Cross Section - Stranded (mm ²)	10 - 70
Mounting Type	DIN Rail
Screw Size	M6

Dimensions

Dimensions (mm)	77.3L x 20.5W x 71.1H
-----------------	-----------------------

Resources

Product catalogue (Flipbook)	Download from here
------------------------------	------------------------------------