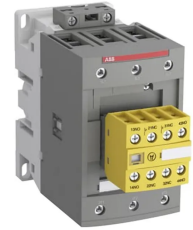


Product No: AFS38302211

**ABB AFS38302211 SAFETY CONTACTOR 3P 50A (AC-1), 18.5KW
415VAC CONTROL 24-60VAC/DC**



General Information

Brand	ABB
-------	-----

Technical Attributes

Auxiliary Contacts	2NO/2NC
Contacts	3NO (Main Contacts)
Mode of Operation	AC/DC
No. of Poles	3P
Rated Control Circuit Voltage AC/DC (V)	24 - 60
Rated Frequency (Hz)	50/60
Rated Impulse Withstand Voltage (kV)	6
Rated Insulation Voltage (V)	690
Rated Operational Current AC-1 690V (A)	50
Rated Operational Current AC-3 415V (A)	38
Rated Operational Power AC-3 415V (kW)	18.5
Rated Operational Voltage AC (V)	690
Terminal Type	Screw

Physical Attributes

Mounting Type	DIN Rail/Panel
---------------	----------------

Dimensions

Dimensions (mm)	86H x 119.5D x 45W
-----------------	--------------------

Protection & Standards

Degree of Protection

IP20 (Main/Coil Terminals), IP40 (Aux. Terminals)

Resources

Product catalogue (Flipbook)

[Download from here](#)
