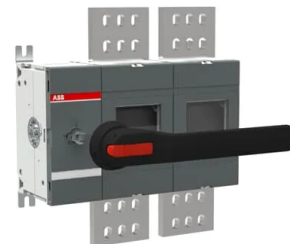


## Product No: OT2500E02P-135

### ABB 2500A 2P SWITCH-DISCONNECTOR OT2500E02P-135



#### General Information

Brand	ABB
Product Type	DC Isolator

#### Technical Attributes

Connection Configuration	Type 1
Conventional Free-Air Thermal Current - I <sub>th</sub> (A)	Θ = 40 °C 2500 A
Net Weight (kg)	17.2
No. of Circuits	1
No. of Poles	2
Operating Mechanism	Mechanism at the End of the Switch (Left Side)
Power Loss (W)	85W Per Pole
Rated Impulse Withstand Voltage (kV)	12
Rated Insulation Voltage (V)	1500
Rated Operational Current (A)	DC-20B: (1500V DC) 2500A AC-20B: (1000V DC) 2500A
Rated Short-Time Withstand Current - I <sub>cw</sub> (kA)	For 0.3s 80kA
Rated Voltage (V)	1500
Shaft Diameter (mm)	12

#### Physical Attributes

Handle Colour	Black
Mounting Type	Base Mounting

### Dimensions

Dimensions (mm)	346.5W x 376.5H x 15.5D
Handle Length (mm)	274
Shaft Length (mm)	280

### Protection & Standards

Standards and Approvals	IEC 60947-1, -3
-------------------------	-----------------

### Resources

IPD Product Catalogue V17	<a href="#">Download from here</a>
---------------------------	------------------------------------