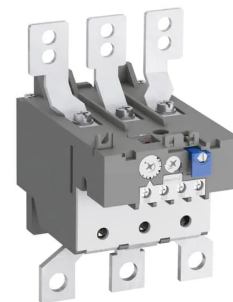


## Product No: TA200DU-150

### ABB TA200DU-150 THERMAL OVERLOAD RELAY 110 ... 150 A TA200DU-150

#### FEATURES

- Economic electromechanical protection device for the main circuit
- Reliable and fast protection for motors in the event of overload or phase failure
- Trip class 10 device
- Temperature compensation
- Automatic or manual reset selectable
- STOP function and a trip indication



#### General Information

Brand	ABB
Product Type	Thermal Overload Relay
Suitable For	AF190, AF205

#### Technical Attributes

Auxiliary Contacts	1NO/1NC
Current Setting Range (A)	110
Main Circuit Electrical Connection	Screw Connection
Maximum Operational Voltage AC (V)	690
No. of Auxiliary Change-over Contacts	1
No. of Normally-closed Auxiliary Contacts	1
No. of Normally-open Auxiliary Contacts	1
No. of Poles	3
Power Loss (W)	3.2/pole
Rated Frequency (Hz)	50/60
Rated Impulse Withstand Voltage (kV)	6
Rated Insulation Voltage (V)	690
Rated Operational Voltage AC (V)	690
Release Class	Class 10 A

Short-Circuit Protective Device	250A, fuse type gG / 200A aM
Thermal Current Setting Range (A)	110 - 150
Trip Class	10

#### Physical Attributes

Mounting Type	Direct Attachment
---------------	-------------------

#### Dimensions

Dimensions (mm)	104W x 151H x 126D
-----------------	--------------------

#### Protection & Standards

Degree of Protection	IP20 (Housing)
Pollution Degree	3

#### Resources

Product catalogue (Flipbook)	<a href="#">Download from here</a>
------------------------------	------------------------------------