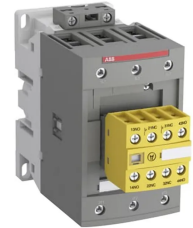


## Product No: AFS12302211

**ABB AFS12302211 SAFETY CONTACTOR 3P 28A (AC-1), 5.5KW  
415VAC CONTROL 24-60VAC/DC**



### General Information

Brand	ABB
-------	-----

### Technical Attributes

Auxiliary Contacts	2NO/2NC
Contacts	3NO (Main Contacts)
Mode of Operation	AC/DC
No. of Poles	3P
Rated Control Circuit Voltage AC/DC (V)	24 - 60
Rated Frequency (Hz)	50/60
Rated Impulse Withstand Voltage (kV)	6
Rated Insulation Voltage (V)	690
Rated Operational Current AC-1 690V (A)	28
Rated Operational Current AC-3 415V (A)	12
Rated Operational Power AC-3 415V (kW)	5.5
Rated Operational Voltage AC (V)	690
Terminal Type	Screw

### Physical Attributes

Mounting Type	DIN Rail/Panel
---------------	----------------

### Dimensions

Dimensions (mm)	86H x 110.5D x 45W
-----------------	--------------------

## Protection & Standards

Degree of Protection

IP20 (Main/Coil Terminals), IP40 (Aux. Terminals)

---

## Resources

Product catalogue (Flipbook)

[Download from here](#)

---