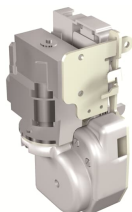


PRODUCT-DETAILS

**M E1.2 220-250 VAC/DC**

**M E1.2 220-250 VAC/DC**



**General Information**

Extended Product Type	M E1.2 220-250 VAC/DC
Product ID	1SDA073711R1
EAN	8015644776442
Catalog Description	M E1.2 220-250 VAC/DC
Long Description	GEARED MOTOR DEVICE 220...250V AC-DC E1.2

**Circular Value**

Conflict Minerals Reporting Template (CMRT)	9AKK108467A5658
Toxic Substances Control Act - TSCA	9AKK108467A8326

**Environmental**

Environmental Information	9AKK108467A6707
REACH Declaration	9AKK108466A1425
RoHS Information	9AKK108466A1424
RoHS Status	Following EU Directive 2011/65/EU and Amendment 2015/863 July 22, 2019

---

**Ordering**


---

Order Code US and Canada	ZE1M5
EAN	8015644776442
Minimum Order Quantity	1 piece
Customs Tariff Number	85389099

---



---

**Dimensions**


---

Product Net Width	100 mm
Product Net Height	162 mm
Product Net Depth / Length	92 mm
Product Net Weight	0.768 kg

---



---

**Container Information**


---

Package Level 1 Units	box 1 piece
Package Level 1 Width	100 mm
Package Level 1 Height	162 mm
Package Level 1 Depth / Length	92 mm
Package Level 1 Gross Weight	0.808 kg
Package Level 1 EAN	8015644776442

---



---

**Additional Information**


---

Configuration Type	Loose or configurable
Current Type	AC/DC
Product Main Type	Accessories for Emax 2
Product Name	Accessory
Product Type	Accessory
Rated Voltage (U <sub>r</sub> )	220...250 V
Standards	IEC
Suitable For	E1.2
Suitable for Product Class	SACE Emax 2

---



---

**Certificates and Declarations**


---

ATEX Certificate	No certification needed
Data Sheet, Technical Information	1SDC200023D0204
Declaration of Conformity - CE	Refer to the EU Declaration of the relative Circuit Breaker
UL Certificate	No certification needed
VDE Certificate	No certification needed
Instructions and Manuals	1SDH000999R0609

---



---

**Classifications**


---

ETIM 7	EC001030 - Motor operator for power circuit-breaker
--------	-----------------------------------------------------

ETIM 8	EC001030 - Motor operator for power circuit-breaker
ETIM 9	EC001030 - Motor operator for power circuit-breaker
IDEA Granular Category Code (IGCC)	5219 >> Switch part or accessory
Object Classification Code	Q
UNSPSC	39121601
WEEE Category	5. Small Equipment (No External Dimension More Than 50 cm)
eClass	V11.1 : 27370412

---

## Categories

---

Low Voltage Products and Systems → Circuit Breakers → Air Circuit Breakers → Accessories for Emax 2

