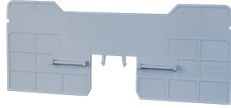


PPCBB1



**connectwell**  
THE RIGHT CONNECTION

### Partition Plate

Partition Plate are used to segregate different groups of Terminal Blocks and provide the required creepage and clearance values in an assembly. Partition Plates electrically isolate adjacent shorting links. They also provide a separation between Terminal Blocks of different potentials.

#### PRODUCT SPECIFICATION

|                   |       |
|-------------------|-------|
| Height            | 65 mm |
| Width (Thickness) | 2 mm  |

#### ORDERING INFORMATION

| CAT. NO. | DESCRIPTION                    | STD. PACK |
|----------|--------------------------------|-----------|
| PPCBB1   | Partition Plate in Grey colour | 50        |

#### SUITABLE FOR

|          |   |
|----------|---|
| CBB120E  | 120 sq.mm Stud Type Power Terminal Blocks |
| CBB185   | 185 sq.mm Stud Type Power Terminal Blocks |
| CBB95LS  | 95 sq.mm Stud Type Power Terminal Blocks  |
| CBB150LS | 150 sq.mm Stud Type Power Terminal Blocks |
| CBB185LS | 185 sq.mm Stud Type Power Terminal Blocks |
| CBB95    | 95 sq.mm Stud Type Power Terminal Blocks  |
| CBB120   | 120 sq.mm Stud Type Power Terminal Blocks |
| CBB120LS | 120 sq.mm Stud Type Power Terminal Blocks |
| CBB150   | 150 sq.mm Stud Type Power Terminal Blocks |