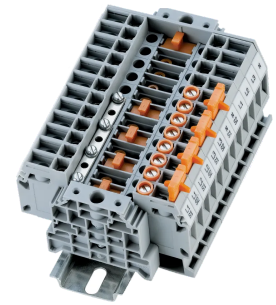


Product No: CDS6U-KIT3P-4CT

CONNECTWELL CDS6U-KIT3P-4CT 3 PH kWh METER TEST TERMINAL BLOCK SCREW CLAMP 4 CT KIT

FEATURES

- - Intended for measuring, control and regulatory circuits
- - Separate testing points facilitate insertion of test probes
- - Disconnection by screw driver operated slide link
- - Kit does not include end stops (CA202) or the mounting rail



General Information

Brand	CONNECTWELL
Product Type	kWh Meter Terminal Test Block

Technical Attributes

Mode of Operation	By Screwdriver
No. of CT Connections	4
Rated Voltage (V)	800
Surge Voltage (kV)	8
Terminal Type	Sliding Type Disconnect and Test
Tightening Torque (Nm)	0.8

Physical Attributes

Cable Entry	Side
Colour	Grey
Conductor Cross Section - Stranded (mm ²)	0.2 - 6.0
Housing Material	Polyamide
Marking Tag	K8 Size (Vertical Print)
Mounting Type	DIN Rail
Screw Size	M3.5

Dimensions

Dimensions (mm)	60H x 98W x 82D
-----------------	-----------------

Protection & Standards

Pollution Degree	3
------------------	---

Standards and Approvals	IEC/EN60947-7-1
-------------------------	-----------------

Resources

Product catalogue (Flipbook)	Download from here
------------------------------	------------------------------------