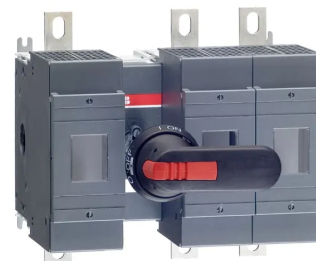


Product No: OS315B12P**ABB FUSE SWITCH 315A 3P F/OPER IP65 HANDLE+SHAFT B1-B4
FUSES CENTRE MECH OS315B12P****General Information**

Brand	ABB
Product Type	Fuse Switch - BS Type

Technical Attributes

Conventional Free-Air Thermal Current - I _{th} (A)	Θ = 40 °C 315 A
Conventional Thermal Current - I _{the} (A)	Fully Enclosed 315 A
Fuse Type	British Standard
No. of Poles	3
Operating Mechanism	Front Operated
Position of Line Terminals	Top In - Bottom Out, Bottom In - Top Out
Power Loss (W)	at Rated Operating Conditions per Pole 32 W
Rated Conditional Short-Circuit Current - I _{nc} (kA)	(690 V) 80 kA
Rated Current (A)	Main Circuit 315 A
Rated Impulse Withstand Voltage (kV)	12
Rated Insulation Voltage	1000 V
Rated Operational Current AC-22A (A)	(380 ... 415 V) 315 A (500 V) 315 A (690 V) 315 A
Rated Operational Current AC-23A (A)	(380 ... 415 V) 315 A (500 V) 315 A (690 V) 315 A
Rated Operational Current AC-21A (A)	(500 V) 315 A (690 V) 315 A
Rated Operational Power AC-23A (kW)	(220 ... 240 V) 100 kW

(400 V) 160 kW
(415 V) 180 kW
(500 V) 220 kW
(690 V) 315 kW

Rated Operational Voltage AC (V)	Main Circuit 690 V AC
Rated Short-time Withstand Current Low Voltage - I _{cw} (A)	for 1 s 14 kiloampere rms
Switching Type	12 (Between the Poles)
Terminal Type	Lug terminals
Tightening Torque (Nm)	30 ... 44 N·m

Physical Attributes

Handle Type	Pistol handle and shaft included
Terminal Width (mm)	25 mm

Dimensions

Dimensions (mm)	230 * 255 * 176 [H*W*D]
Fuse Size	B1-B4

Protection & Standards

Pollution Degree	3
Standards	IEC 60947-3