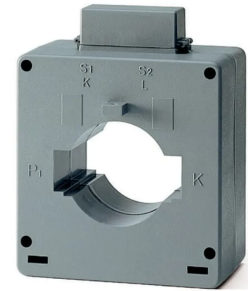


Product No: CT6/400

ABB CT6/400 SOLID-CORE CURRENT TRANSFORMER 400/5 RATIO, CLASS 0.5 6VA CT6



General Information

Brand	ABB
Product Type	Solid-Core

Technical Attributes

Accuracy	$\pm 0.5\%$
Apparent Power Output (VA)	5
CT Ratio	400/5
Current Limit Function	Full Scale 5
Power Loss (W)	16
Rated Frequency (Hz)	50 / 60
Rated Primary Current - I_{pn} (A)	400
Rated Secondary Current - I_{sn} (A)	5

Physical Attributes

Cable Use	Cable and Horizontal bar
Mounting Type	Through primary
Operational Temperature Range (°C)	-5 to +50

Dimensions

Busbar Cross Section (mm ²)	60 X 20
Cable Cross Section (mm ²)	50

Protection & Standards

Degree of Protection

IP30

Resources

Product catalogue (Flipbook)

[Download from here](#)