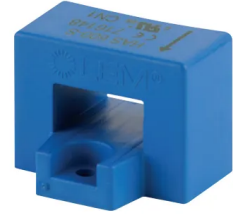


Product No: 48290704

SOCOME DC CURRENT SENSORS 400A SOLID-CORE 48290704

FEATURES

- Quick RJ12 connection makes wiring easy and reliable
- Plug and play, fast configuration of the sensor's rating
- Easy to install, ideal for installations with limited space available
- Colour coded cables allows for ease of identification and prevents wiring errors
- Open-loop Hall effect sensors
- Accuracy of current measurements: Solid core sensors < 1%
- Category III overvoltage
- 4-point male Molex terminal strip



General Information

Brand	SOCOME
ETIM Class	EC002048
Model	DC
Product Type	Current Sensor
Series	DIRIS Digeware

Technical Attributes

Accuracy Class	0.5
Calibrated	Yes
Connector Type	RJ12-Molex Connector Cable
Contact Protection	Yes
Overcurrent Limiting Factor	FS 10
Rail Type	Copper Rail
Rated Current (A)	400
Rated Primary Current - I_{pn} (A)	400
Rated Secondary Apparent Power (VA)	0.1

Secondary Connection	Plug-in Connection
Secondary Rated Current	Molex
Sensor Type	Solid Core
Voltage Type	DC

Physical Attributes

Mounting Type	Snap Mounting
Operational Temperature Range (°C)	-10 to +80

Dimensions

Aperture (mm)	10.4 x 20.4
Size of Frame	1

Protection & Standards

Standards	IEC, UL
-----------	---------

Resources

Product catalogue (Flipbook)	Download from here
------------------------------	------------------------------------