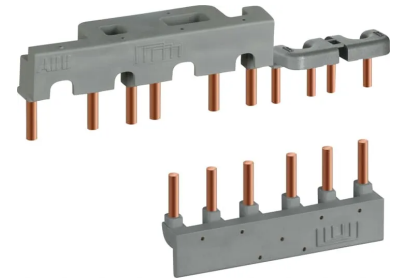


Product No: BEY384

ABB BEY38-4 CONNECTION SET FOR STAR-DELTA STARTER BEY384



General Information

Brand	ABB
Product Type	Accessory
Suitable For	AF26 - AF38
Type	Connecting Bridge

Technical Attributes

Rated Operational Voltage AC (V)	Main Circuit: 690V AC
Terminal Type	Screw

Dimensions

Dimensions (mm)	87.2W x 36.5H x 23.05D
Weight (kg)	0.11

Protection & Standards

Standards and Approvals	EN 60947-1, EN 60947-4-1, UL 60947-4-1
-------------------------	--

Resources

Product catalogue (Flipbook)	Download from here
------------------------------	------------------------------------