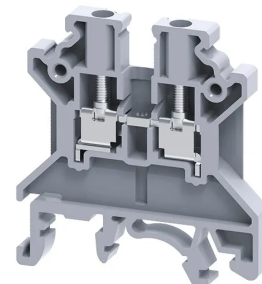


Product No: CTS2.5UNBG

CONNECTWELL TERMINAL BLOCK SCREW CLAMP BEIGE 2.5mm² CTS2.5UNBG



General Information

Brand	CONNECTWELL
Product Type	Screw Clamp

Technical Attributes

Function	Feed Through
Rated Current (A)	24
Rated Voltage (V)	1000
Tightening Torque (Nm)	0.4

Physical Attributes

Cable Entry	Side Entry
Colour	Beige
Conductor Cross Section - Stranded (mm ²)	0.2 - 2.5
Housing Material	Polyamide
Mounting Type	DIN rail
Screw Size	M2.5

Dimensions

Dimensions (mm)	43L X 5W X 46.2H
-----------------	------------------

Protection & Standards

Pollution Degree	3
------------------	---

Resources

Product catalogue (Flipbook)

[Download from here](#)
