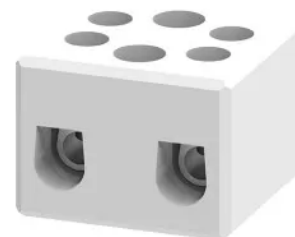


Product No: CB6/1

CONNECTWELL TERMINAL BLOCK CERAMIC 1P FOR 4mm² WIRE CB6/1



General Information

Brand	CONNECTWELL
Product Type	Screw Clamp

Technical Attributes

Function	Feed Through
Rated Current (A)	32
Rated Voltage (V)	800
Tightening Torque (Nm)	0.5

Physical Attributes

Cable Entry	Side Entry
Conductor Cross Section - Stranded (mm ²)	0.5 - 4
Housing Material	Ceramic
Mounting Type	Free Floating / Surface / Panel
Screw Size	M3.5

Dimensions

Dimensions (mm)	19W X 25H
-----------------	-----------

Protection & Standards

Pollution Degree	3
------------------	---

Resources

Product catalogue (Flipbook)

[Download from here](#)
