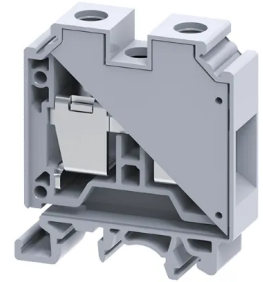


Product No: CTS35UNBU

CONNECTWELL 35mm SCREW CLAMP 'BLUE' TERMINAL BLOCK CTS35UNBU

FEATURES

- Feed Through Terminal Blocks are the most Versatile terminals for control, Automation, Instrumentation and Power Distribution applications
- A specially designed flexible foot enable easy mounting and dismantling from the Din rail with the help of screw driver.
- Cross connection can be achieved with the aid of shorting links / sleeves & screws.
- These Terminal Blocks have marker holding recesses to accept marking tags for circuit identification



General Information

Brand	CONNECTWELL
Product Type	Screw Clamp

Technical Attributes

Mode of Operation	Feed Through
Rated Current (A)	125
Rated Voltage AC/DC (V)	1000
Surge Voltage (kV)	8
Tightening Torque (Nm)	2.5

Physical Attributes

Colour	Blue
Material	Polyamide

Protection & Standards

Pollution Degree	3
------------------	---