

LUMI 76612

SE: Denna produkt innehåller tre ljuskällor med energieffektivitetsklass F.
Lysdioden är utbyttbar som reservdel.
20000 tim ≈ 9 år (6 tim/dag)

NO: Dette produktet inneholder tre lyskilder med energieffektivitetsklasse F.
Diodelyskilden kan skiftes som reservdel.
20000 tim ≈ 9 år (6 tim/dag)

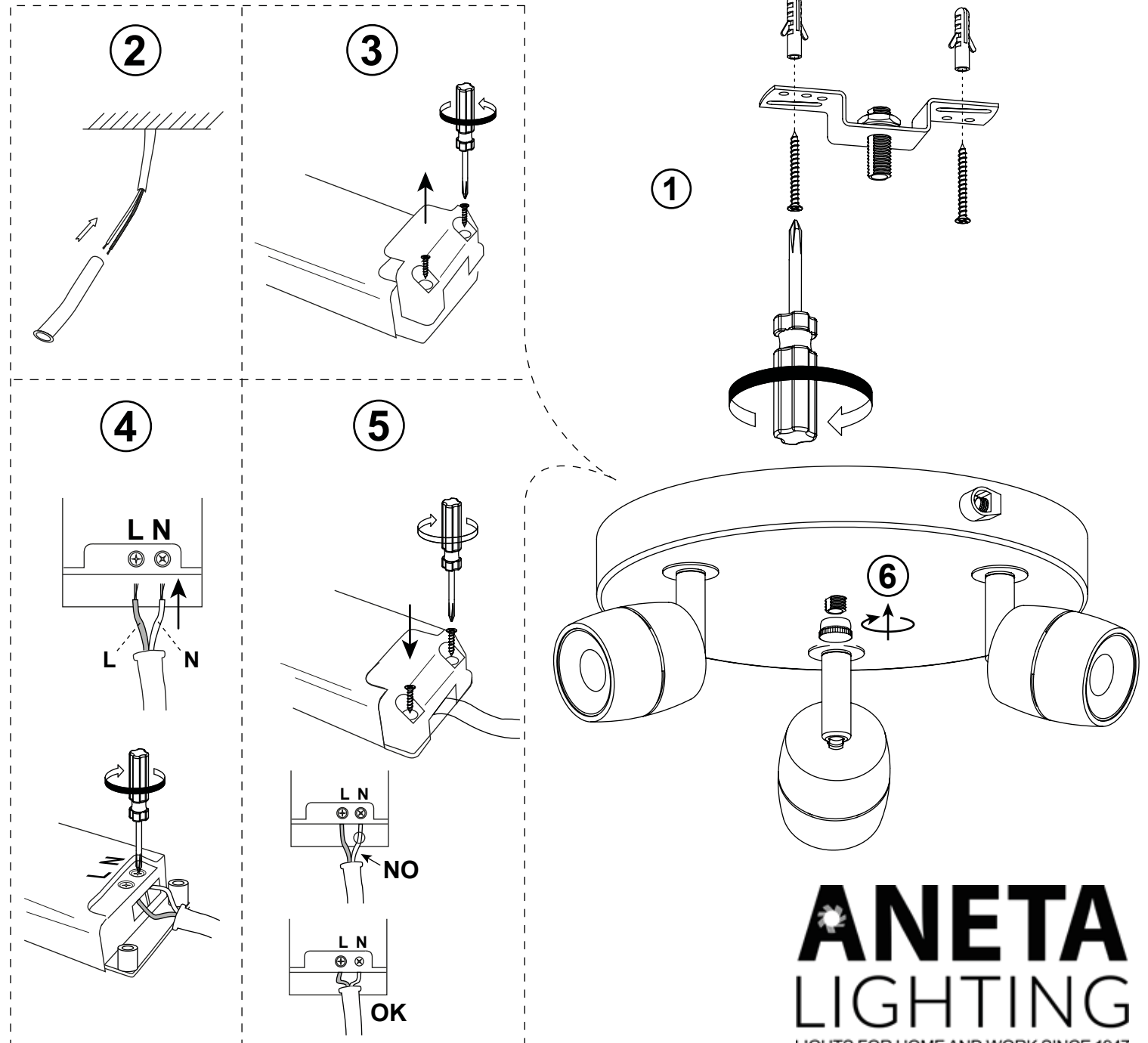
FI: Tämä tuote sisältää kolme valonlähdetä, molempien energiatehokkuusluokka on F.
LED valolähde vaihdetta vissa, löytyy varaosana.
20 000 tuntia ≈ 9 vuotta (6 t/päivä)

EN: This product contains three light sources of energy efficiency class F.
The LED-chip is exchangeable as a spare part.
20000 h ≈ 9 years (6 h/day)

Light Source data (1 pce):

Lighting technology used:	LED
Mains or non-mains:	non-mains
Directional or non-directional:	non-directional
Connected L.S.:	no
Color-tuneable:	no
Envelope:	no
High luminance:	no
Anti-glare shield:	no
Dimmable:	no
Energy consumption in on-mode: ..	5 kWh / 1000 h
Energy efficiency class (A-G):	F
Useful luminous flux:	537 lm *
CCT colour temperature:	3000 K
On-mode power:	4.72 W
Stand-by power:	N/A
Networked standby power:	N/A
CRI:	≥ 80
R9 color rendering index:	1
Chromaticity coordinates (X, Y): ...	0.440, 0.403
Lifetime L ₇₀ B ₅₀ :	20 000 hours
Lumen maintenance factor:	0.93
Survival factor:	0.95
Power supply input:	0.1A

* The luminous flux stated here is the value for the light source itself in accordance with Regulation (EU) 2019/2015. The luminous flux stated on the packing box is for the lighting fitting, where the light from the light source is partly absorbed by glass/glare shield/shade and parts of the fitting, and is therefore lower than for the light source.



ANETA
LIGHTING
LIGHTS FOR HOME AND WORK SINCE 1947