

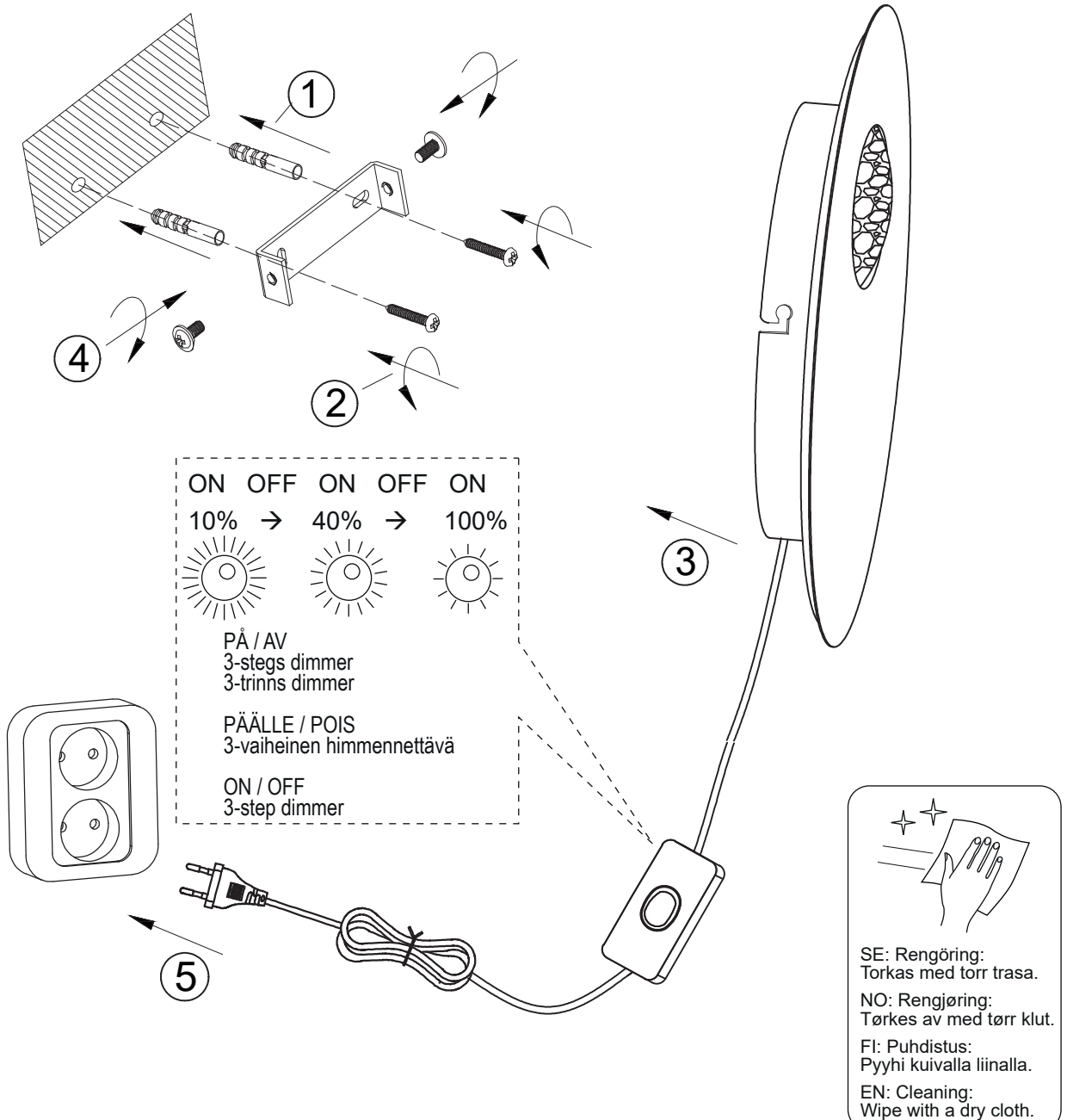
PLANET 10205

www.aneta.se

www.aneta.no

ANETA LIGHTING

LIGHTS FOR HOME AND WORK SINCE 1947



SE: Denna produkt innehåller en ljuskälla med energieffektivitetsklass E.

Inbyggd LED-ljuskälla som är utbyttbar som reservdel.

Livstid 50000 timmar motsvarar c.a 22 år vid genomsnittlig användning 6 timmar per dag.

NO: Dette produktet inneholder en lyskilde med energieffektivitetsklasse E.

Integrert diodelyskilde som kan skiftes som reservdel.

Levetid 50000 timer tilsvarer ca 22 år ved gjennomsnittlig bruk 6 timer pr dag

FI: Tämä tuote sisältää valonlähteen, jonka energiatehokkuusluokka on E.

Integroitu Led valolähde, voidaan vaihtaa varaosalla.

Käyttöaika 50000 h, vastaa noin 22 vuotta jos päivittäinen käyttöaika 6 tuntia.

EN: This product contains a light source of energy efficiency class E.

Integrated LED light source that can be replaced as spare part. Lifetime 50000 h is equivalent to about 22 years at an average use of 6 hours per day.

Light Source :

Lighting technology used:	LED	CCT colour temperature:.....	2800 K
Mains or non-mains:	non-mains	On-mode power:	16,2 W
Directional or non-directional:	non-directional	Stand-by power:	N/A
Connected L.S.:	no	Networked standby power:	N/A
Color-tuneable:	no	CRI:	> 80
Envelope:	no	R9 color rendering index:	3
High luminance:	no	Chromaticity coordinates:	x:0.458, y:0.419
Anti-glare shield:	no	Lifetime L ₇₀ B ₅₀ :	50 000 hours
Dimmable:	yes	Lumen maintenance factor:	0,96
Energy consumption in on-mode:	17 kWh / 1000 h	Survival factor:	0,90
Energy efficiency class (A-G):	E	Measures LxBxH:	6x1.2x1125mm
Useful luminous flux:.....	1945 lm	Supply current:	450 mA CC

* The luminous flux stated here is the value for the light source itself in accordance with Regulation (EU) 2019/2015. On the box the luminous flux for the lighting fitting is stated, where the light is partly absorbed by glass/glare shield/shade and parts of the fitting, why it is lower than for the light source.