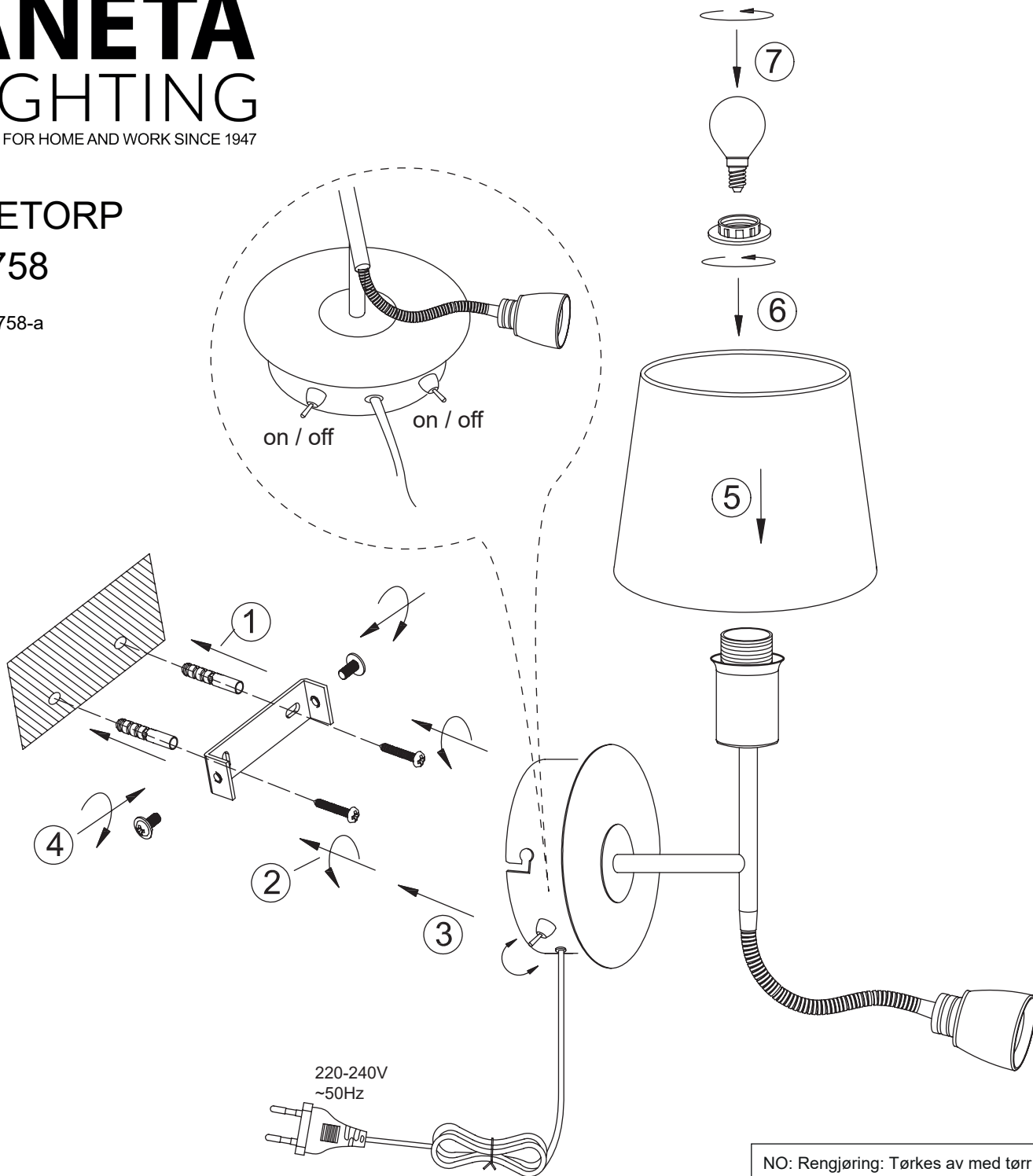


# ANETA LIGHTING

LIGHTS FOR HOME AND WORK SINCE 1947

## EKETORP 10758

typ 10758-a



[www.aneta.se](http://www.aneta.se)  
[www.aneta.no](http://www.aneta.no)

NO: Rengjøring: Tørkes av med tørr klut.  
SE: Rengöring: Torkas med torr trasa.  
FI: Puhdistus: Pyyhi kuivalla liinalla.  
EN: Cleaning: Wipe with a dry cloth.

NO: Dette produktet inneholder en lyskilde med energieffektivitetsklasse F. Diodelyskilden i armaturen er ikke utskiftbar, når lyskildens levetid er slutt skal hele armaturen byttes. 50000 tim ≈ 20 år (6 tim/dag)

SE: Denna produkt innehåller en ljuskälla med energieffektivitetsklass F. Lysdioden i armaturen är inte utbyttbar, när ljuskällans livstid är slut ska hela armaturen bytas. 50000 tim ≈ 20 år (6 tim/dag)

FI: Tämä tuote sisältää valonlähteen, jonka energiatehokkuusluokka on F. Valaisimen valolähde ei ole vaihdettavissa. Kun valolähteen elinkaari on loppu niin koko valaisin on vaihdettava. 50 000 tuntia ≈ 20 vuotta (6 t/päivä)

EN: This product contains a light source of energy efficiency class F. The diode lamp of vthis luminaire is not replaceable; when the light source reaches its end of life the whole luminaire shall be replaced. 50000 h ≈ 20 years (6 h/day)

### Light Source :

Lighting technology used: ..... LED  
Mains or non-mains: ..... non-mains  
Directional or non-directional: ..... non-directional  
Connected L.S.: ..... no  
Color-tuneable: ..... no  
Envelope: ..... no  
High luminance: ..... no  
Anti-glare shield: ..... no  
Dimmable: ..... yes  
Energy consumption in on-mode: .... 3 kWh / 1000 h  
Energy efficiency class (A-G): ..... F  
Useful luminous flux: ..... 285 lm  
CCT colour temperature: ..... 2700 K

CCT colour temperature: ..... 3000 K  
On-mode power: ..... 2,85 W  
Stand-by power: ..... 0 W  
Networked standby power: .. 0 W  
CRI: ..... ≥ 80  
R9 color rendering index: .... 0  
Chromaticity coordinates: .... x:0.446, y:0.410  
SDCM: ..... < 6  
Lifetime  $L_{70, B_{50}}$ : ..... 50 000 hours  
Lumen maintenance factor: ..... 0,96  
Survival factor: ..... 0,90  
Measures LxBxH: ..... mm  
Supply current: ..... 300 mA CC

\* The luminous flux stated here is the value for the light source itself in accordance with Regulation (EU) 2019/2015. On the box the luminous flux for the lighting fitting is stated, where the light is partly absorbed by glass/glare shield/shade and parts of the fitting, why it is lower than for the light source.