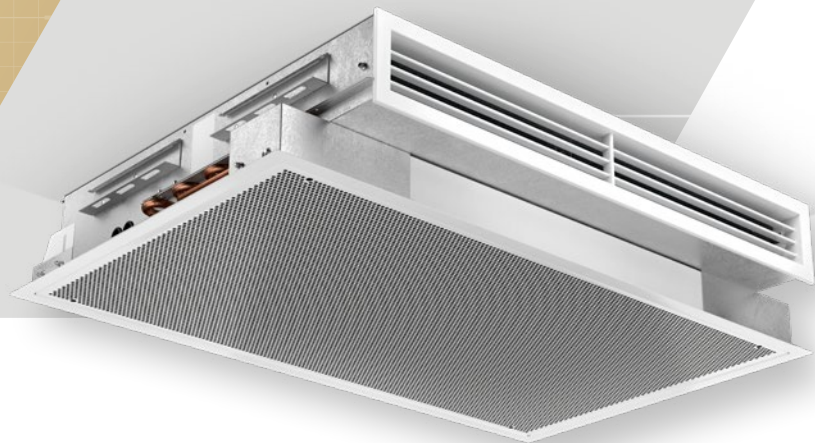


# iQ STAR ORION II CHILLED BEAM

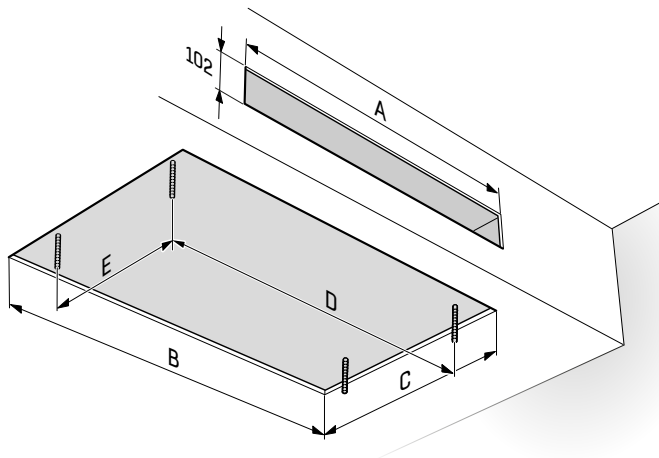
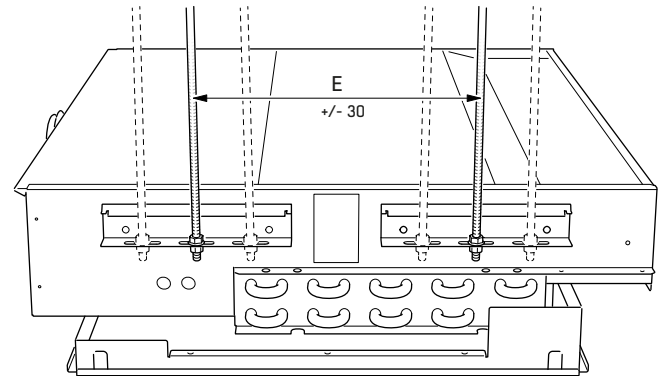
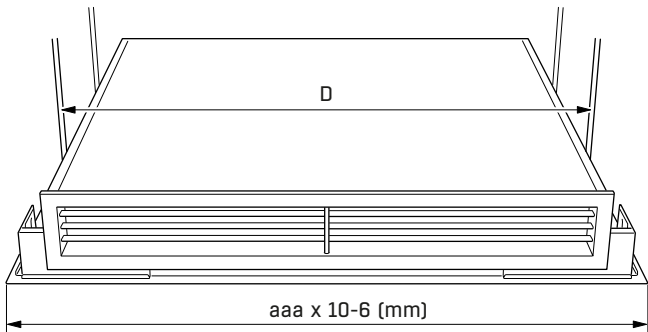
## INSTALLATION, COMMISSIONING AND MAINTENANCE

- SE | MONTERING, INJUSTERING OCH UNDERHÅLL
- FI | ASENNUS, KÄYTTÖNOTTO JA HUOLTO
- DK | INSTALLATION, JUSTERING OG VEDLIGEHOELSE
- DE | INSTALLATION, INBETRIEBNAHME UND WARTUNG
- NL | INSTALLATIE, INBEDRIJFSTELLING EN ONDERHOUD
- FR | MONTAGE, EQUILIBRAGE EN MAINTENANCE
- IT | INSTALLAZIONE, MESSA IN SERVIZIO E MANUTENZIONE
- PL | MONTAŻ, ROZRUCH I KONSERWACJA
- CZ | INSTALACE, UVEDENÍ DO PROVOZU A ÚDRŽBA
- RU | МОНТАЖ, ВВОД В ЭКСПЛУАТАЦИЮ И ТЕХНИЧЕСКОЕ ОБСЛУЖИВАНИЕ
- LT | MONTAVIMAS, PARENGIMAS EKSPLOATuoti IR PRIEžiūra
- LV | UZSTĀDĪšana, NODOšana EKSPLOATĀcijā UN TEHNISKĀ ARKOPE

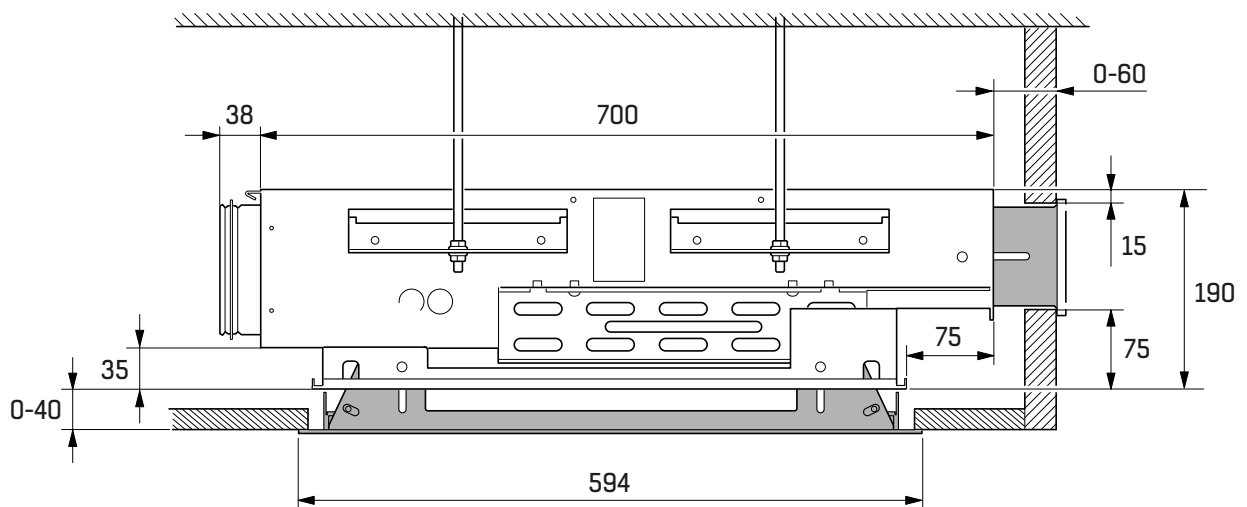


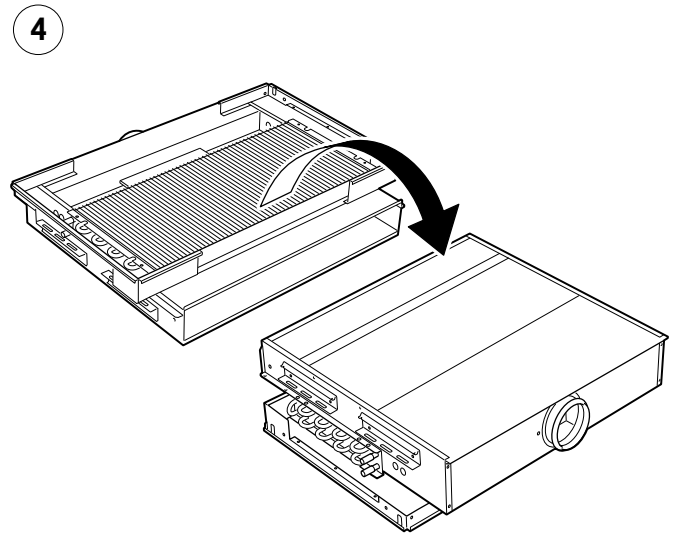
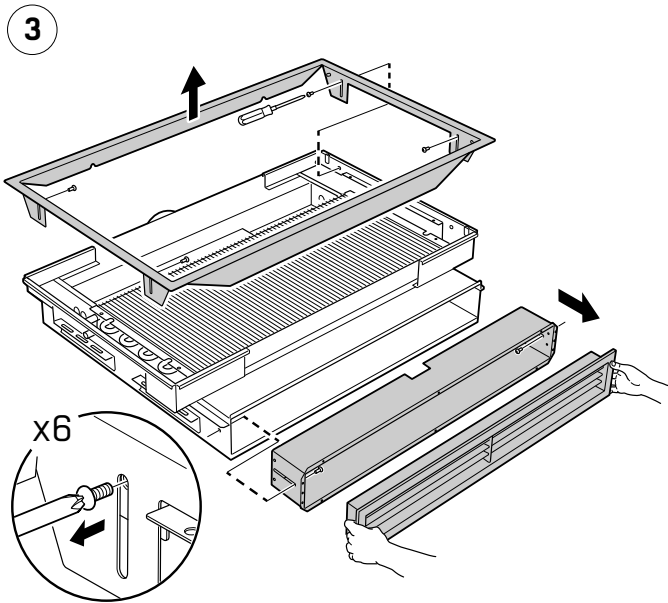
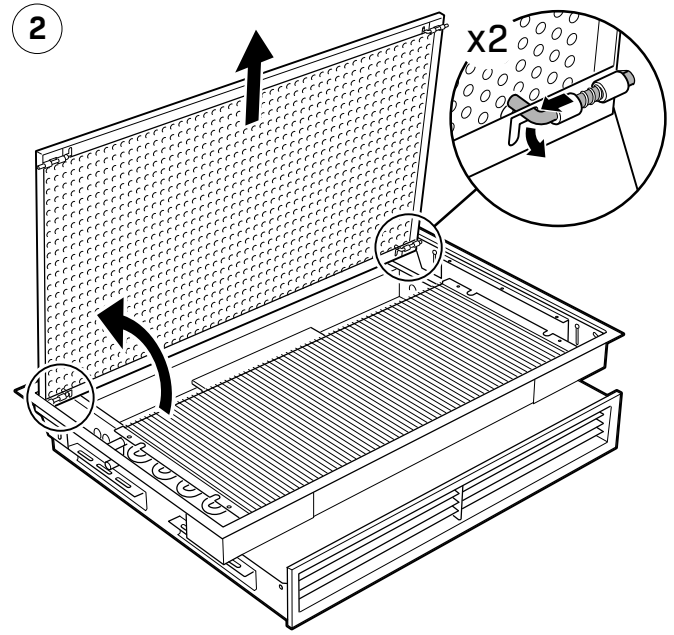
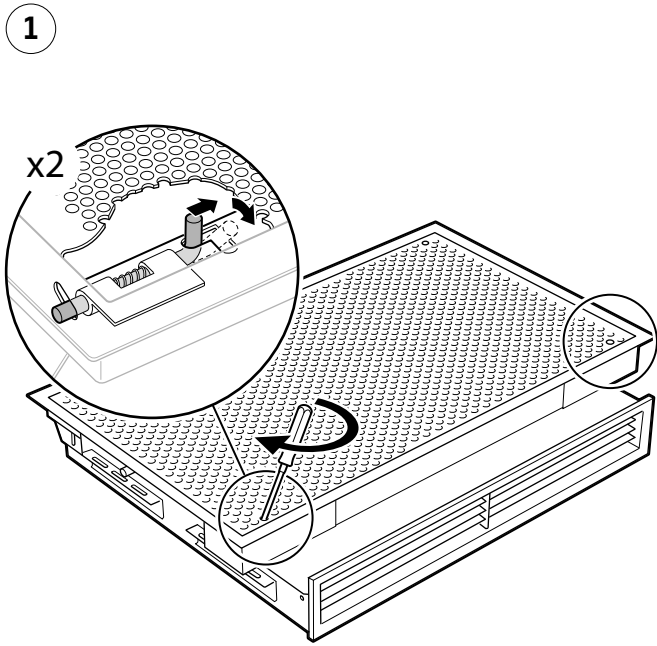
**IQHA-aaa-b-cc-dd-1**

aaa (cm) = 100,120,140,160

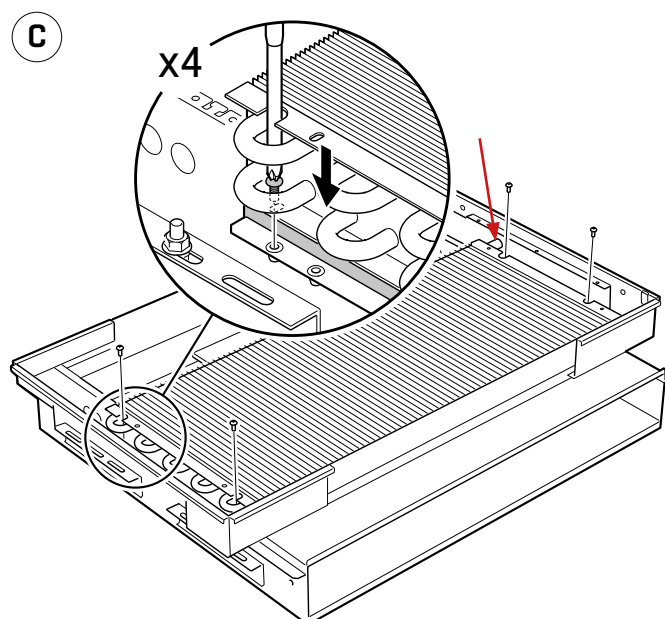
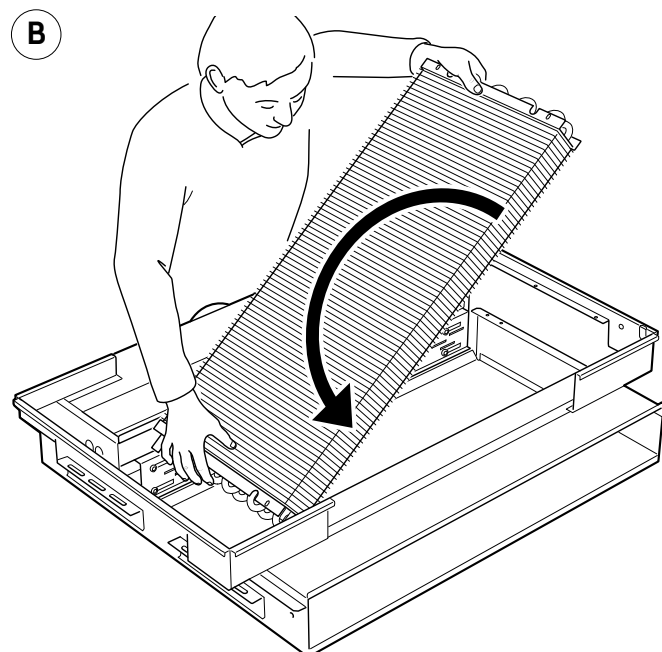
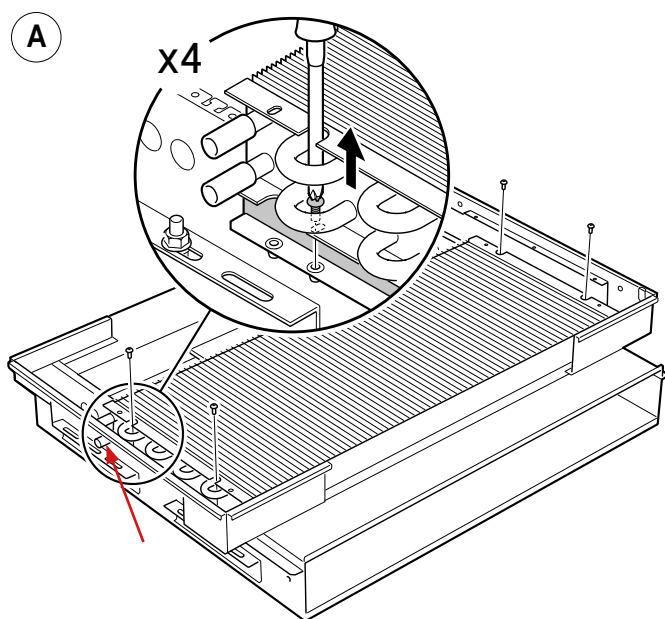


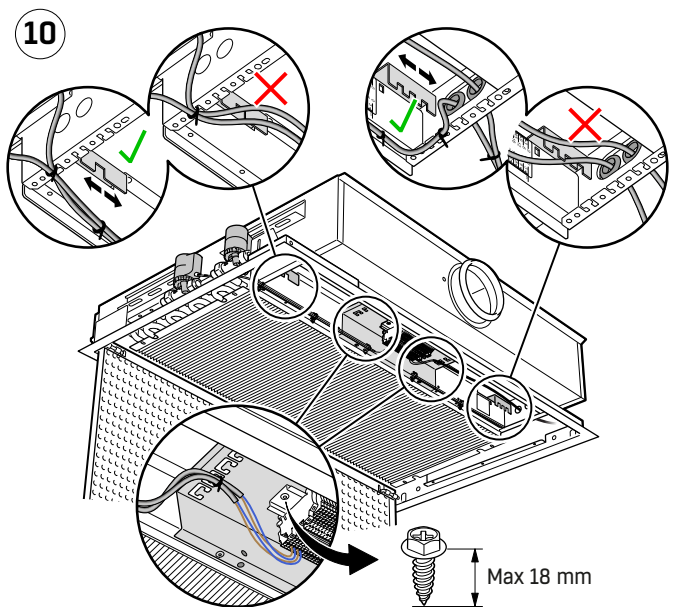
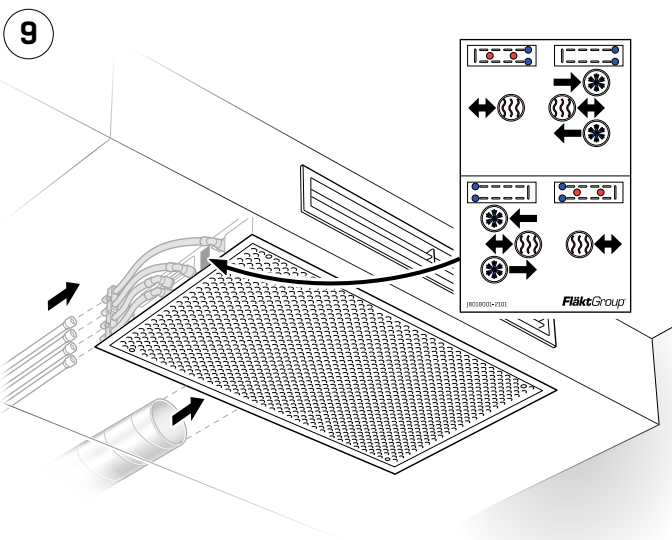
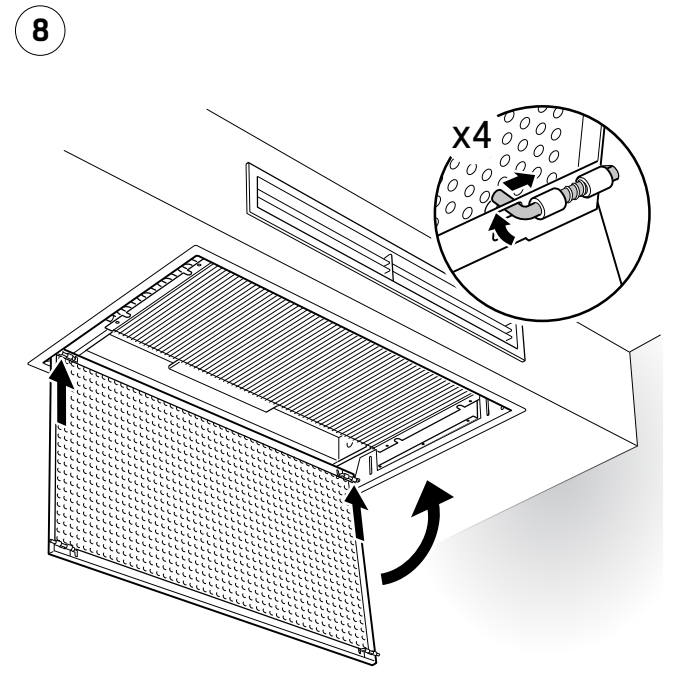
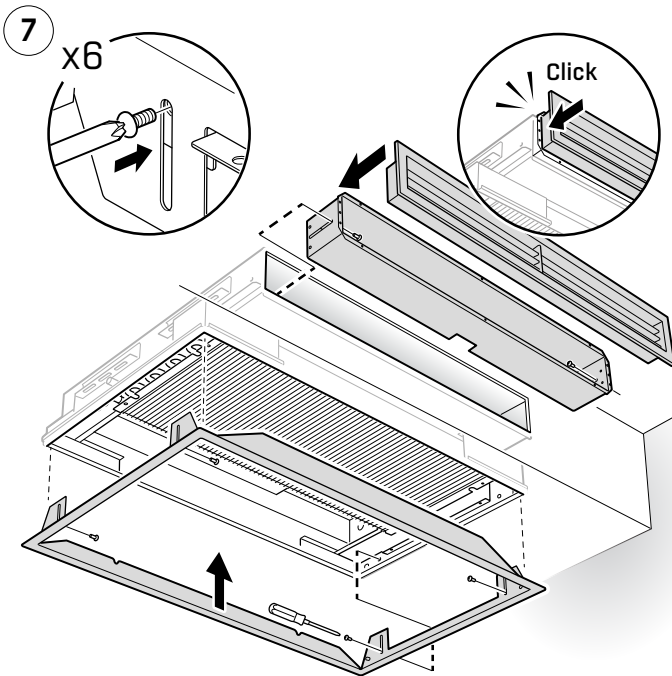
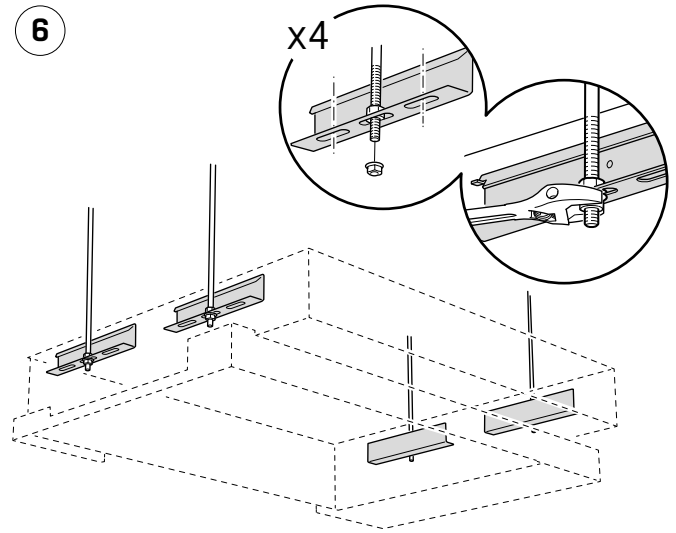
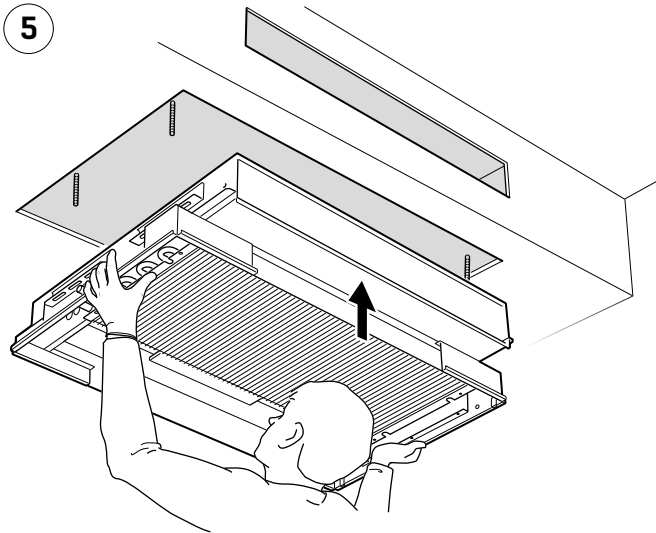
aaa (cm)	Ceiling	A (mm)	B (mm)	C (mm)	D (mm)	E (mm)
100	Plaster	810	980	580	838	190/310/430
120		1010	1080		1038	
140		1210	1280		1238	
160		1410	1480		1438	
100	T24/T15	810	1000	600	838	
120		1010	1200		1038	
140		1210	1400		1238	
160		1410	1600		1438	

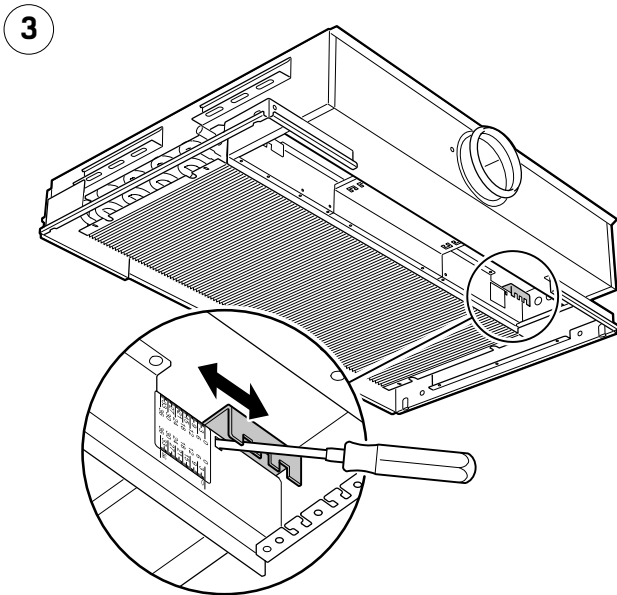
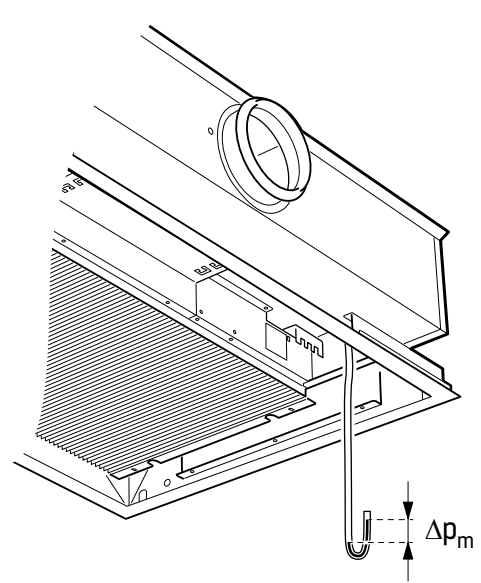
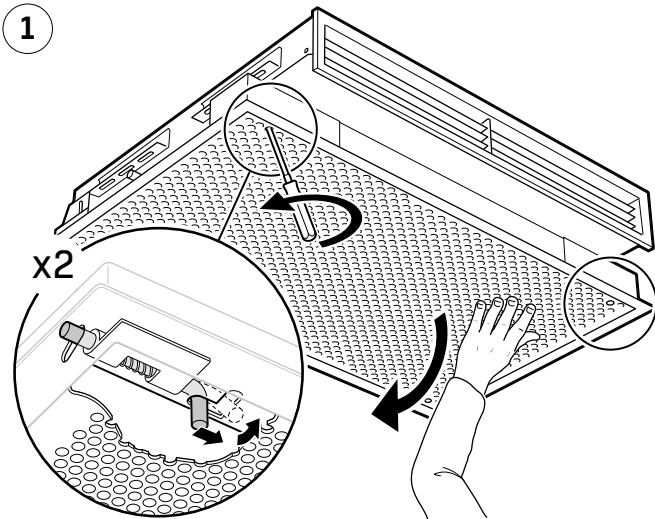




- GB** IF NEEDED, THE COIL CAN BE TURNED OVER  
**SE** OM BEHOVET FINNS, VÄND PÅ BATTERIET  
**FI** KÄÄNNÄ PATERI TARVITTAESSA  
**DK** OM NØDVENDIGT VENDES FLADEN  
**DE** BEI BEDARF KANN DER WÄRMETAUSCHER UMGEDREHT WERDEN  
**NL** DRAAI INDIEN NODIG HET ELEMENT OM  
**FR** SI BESOIN, RETOURNER LA BATTERIE  
**IT** ALL'OCCORRENZA, CAPOVOLGERE LA BATTERIA  
**PL** W RAZIE POTRZEBY OBRÓĆ WĘŻOWNICĘ  
**CZ** V PŘÍPADĚ POTŘEBY VÝMĚNÍK OTOČTE  
**RU** ПРИ НЕОБХОДИМОСТИ ПЕРЕВЕРНУТЬ  
**LT** JEI REIKIA, ŠILUMOKAITĮ GALIMA APVERSTI  
**LV** JA NEPIECIEŠAMS, APGRĪEZIET SPOLI OTRĀDI

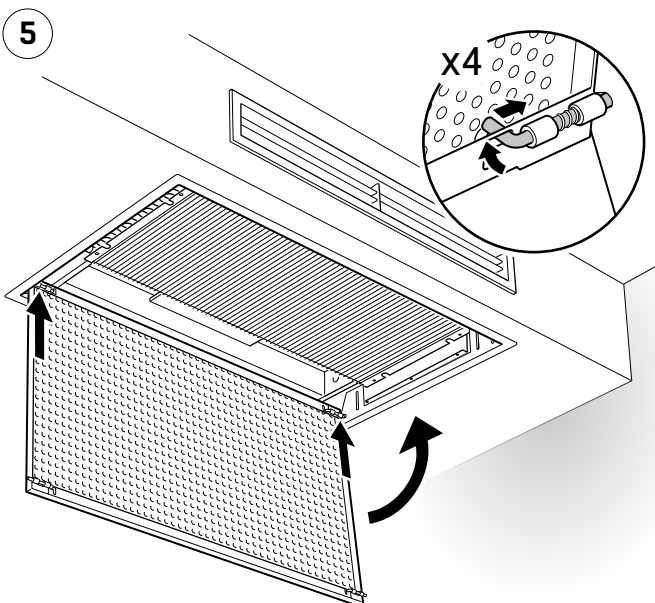




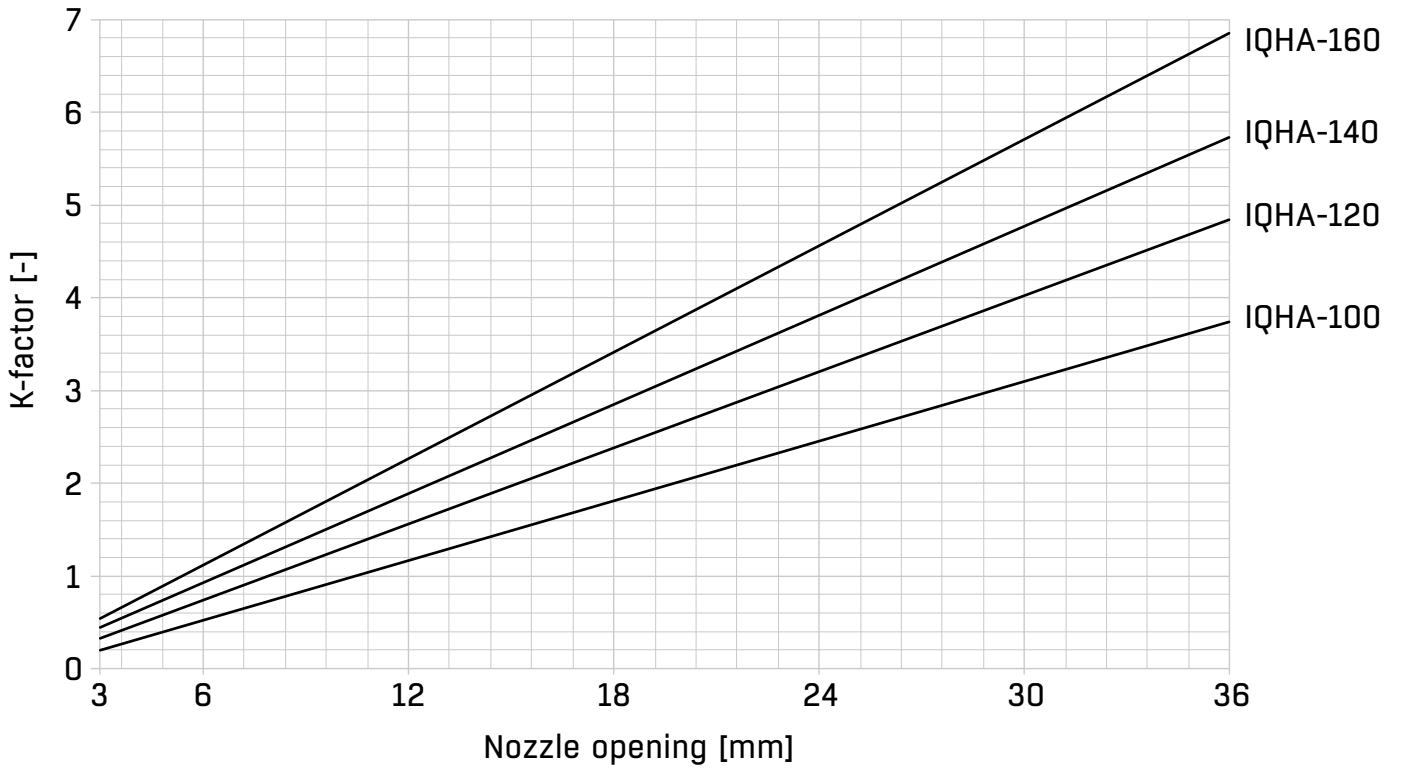


4

$q = k \sqrt{\Delta p_m}$	$q = 3.6k \sqrt{\Delta p_m}$
(l/s) (Pa)	(m <sup>3</sup> /h) (Pa)



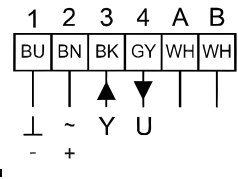
### IQHA





### 309VM-024-150-MB-003

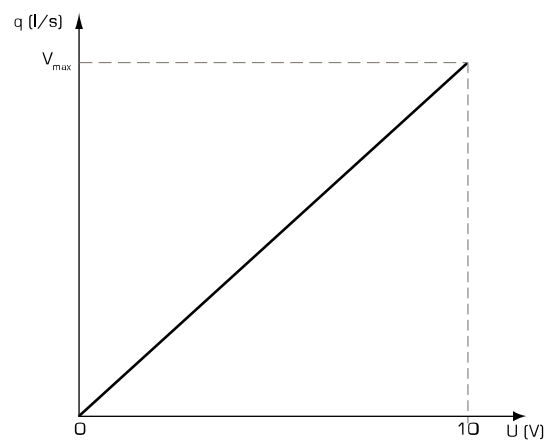
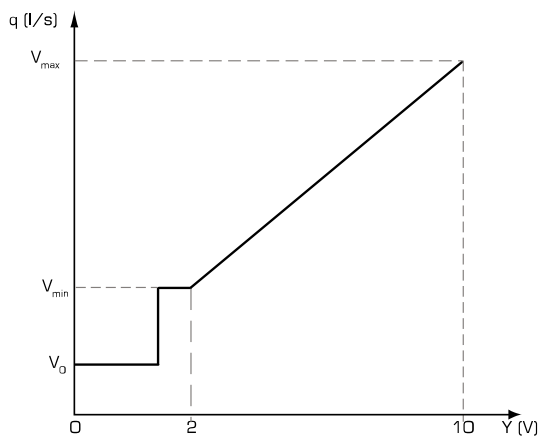
150 N  
 3,0 W (1,0 W) • 5,0 VA  
 12,5 mm/min • 36 mm  
 150 Pa • max.100 kPa



XXXXXXX • XX • 15/11  
 Serial nr. Software version YY/MM

Table 1: Wiring

1	2	3	4	a	b
24 VAC (-)	24 VAC (-)	0...10 V	0...10 V	Modbus	
24 VDC (-)	24 VDC (+)				
Operating Voltage		Control signal (Y)	Feedback signal (U)		
blue (BU)	brown (BN)	black (BK)	grey (GY)		

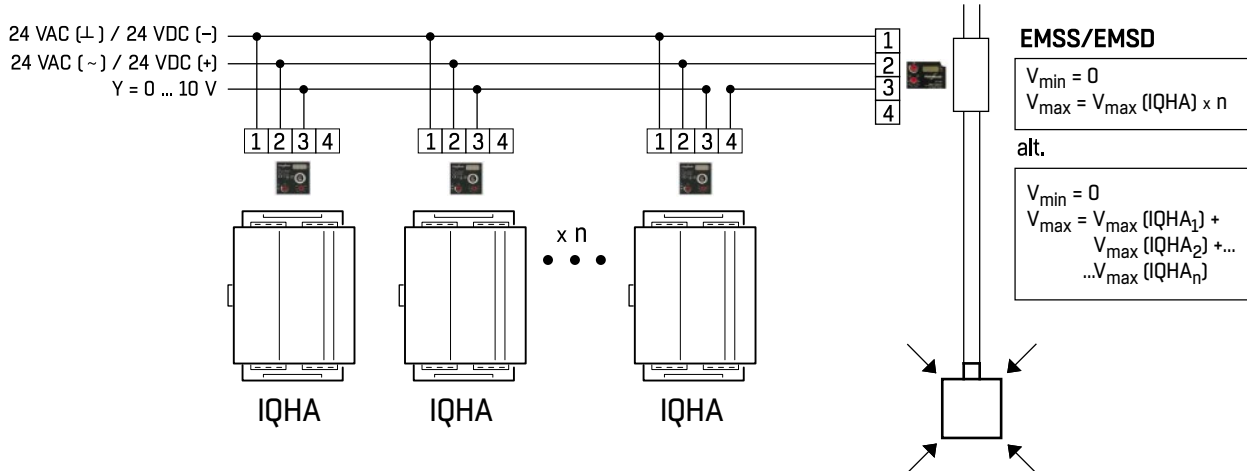
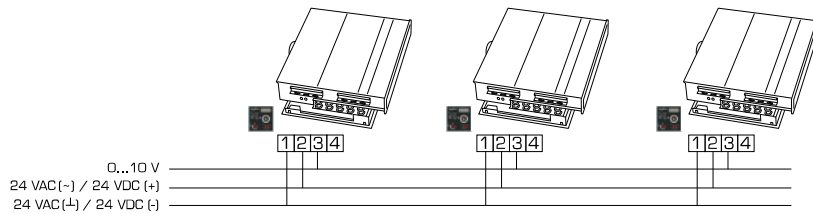


$$q_{act} = V_{min} + \frac{Y - 2}{8} \times (V_{max} - V_{min})$$

(l/s)                      (l/s)

$$U = 0 - 10 \quad (0V = 0\text{ l/s}, 10V = V_{max})$$

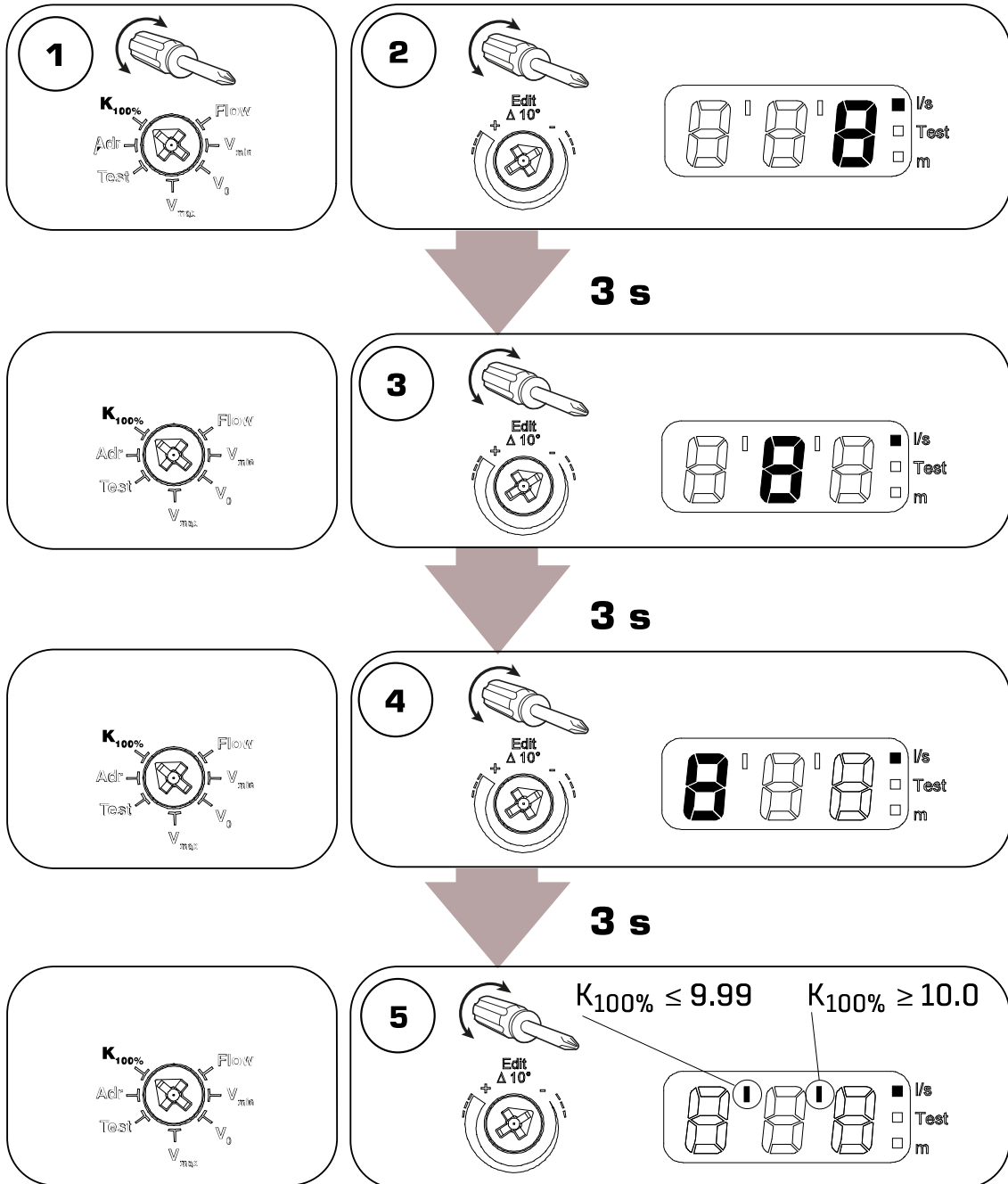
(VDC)



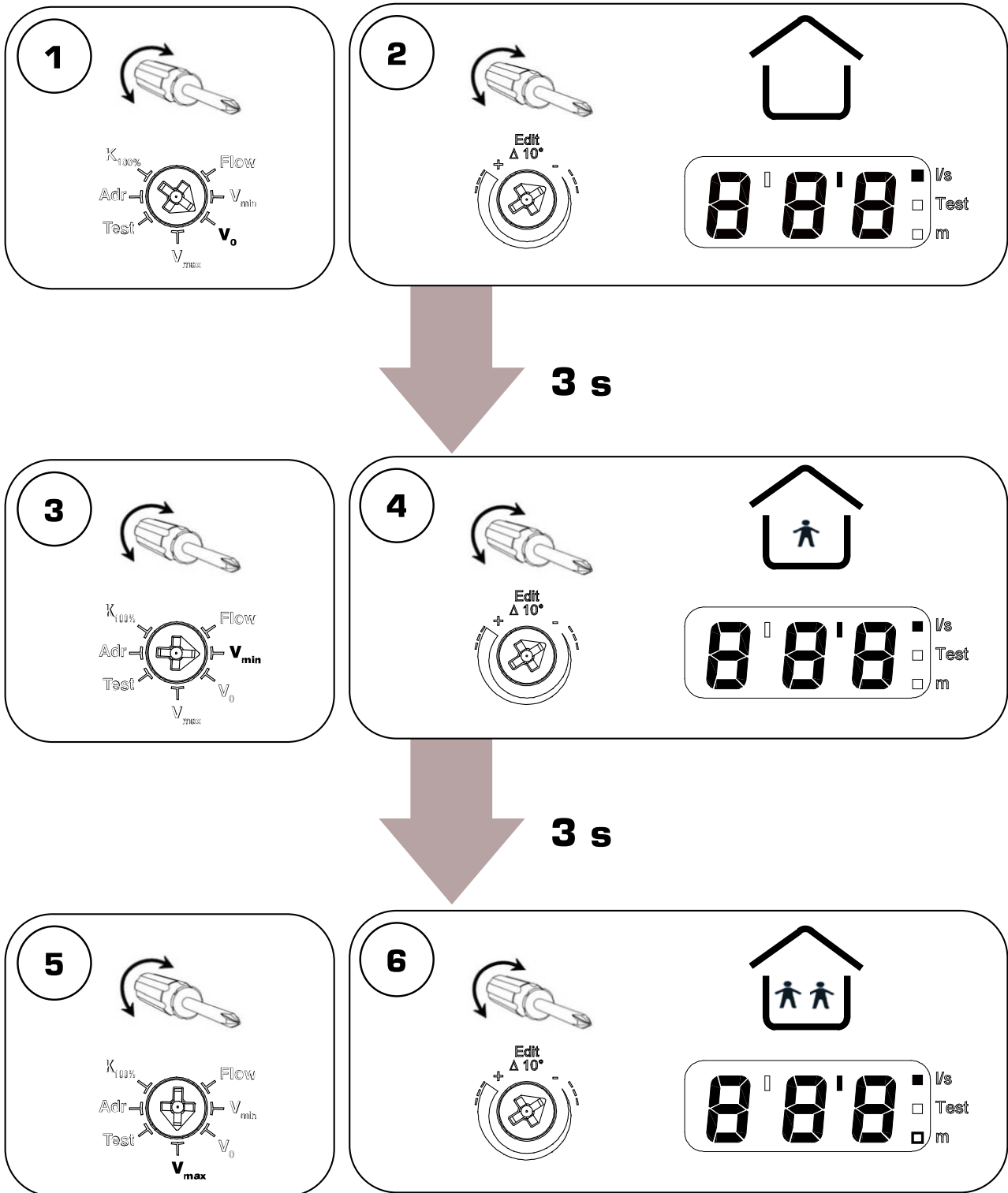


**K<sub>100%</sub>**

aaa (cm)	K <sub>100%</sub>
100	3.7
120	4.8
140	5.7
160	6.8

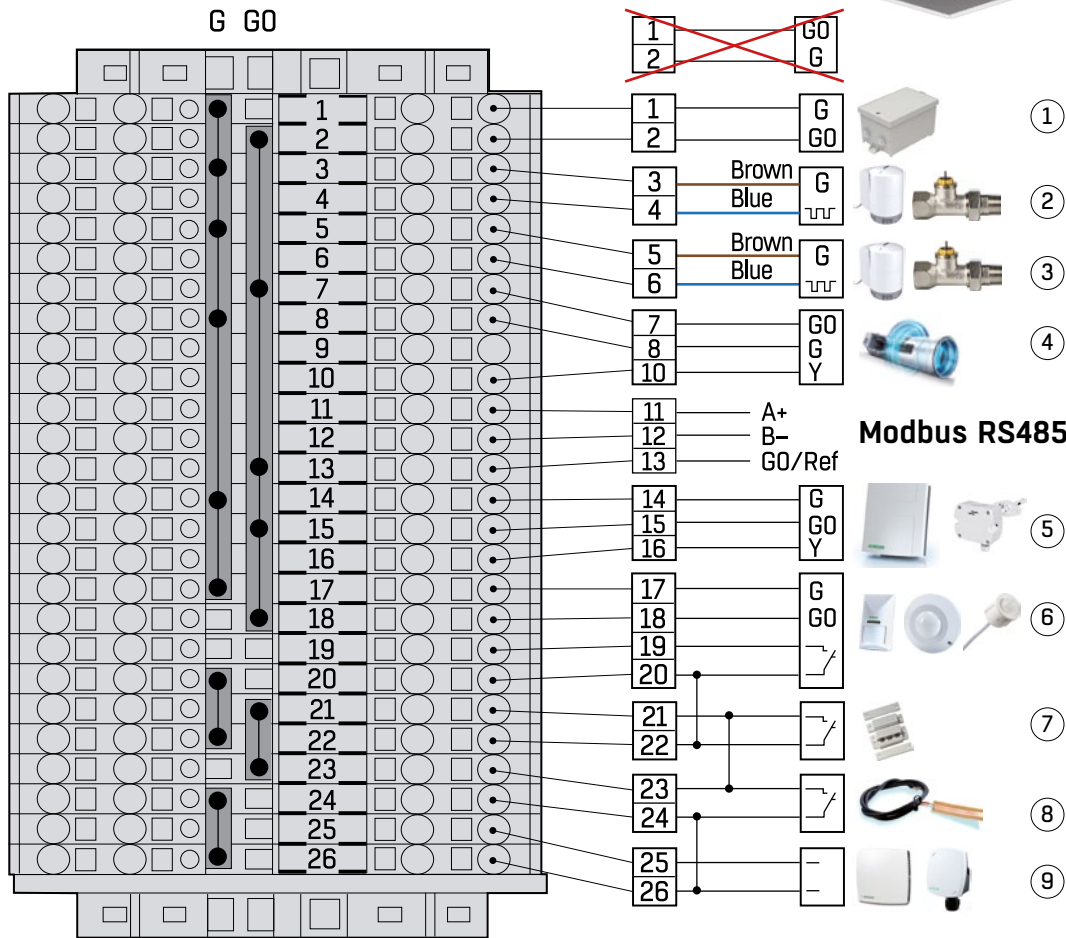


**V<sub>0</sub>, V<sub>MAX</sub> & V<sub>MIN</sub>**



# STRZ-76

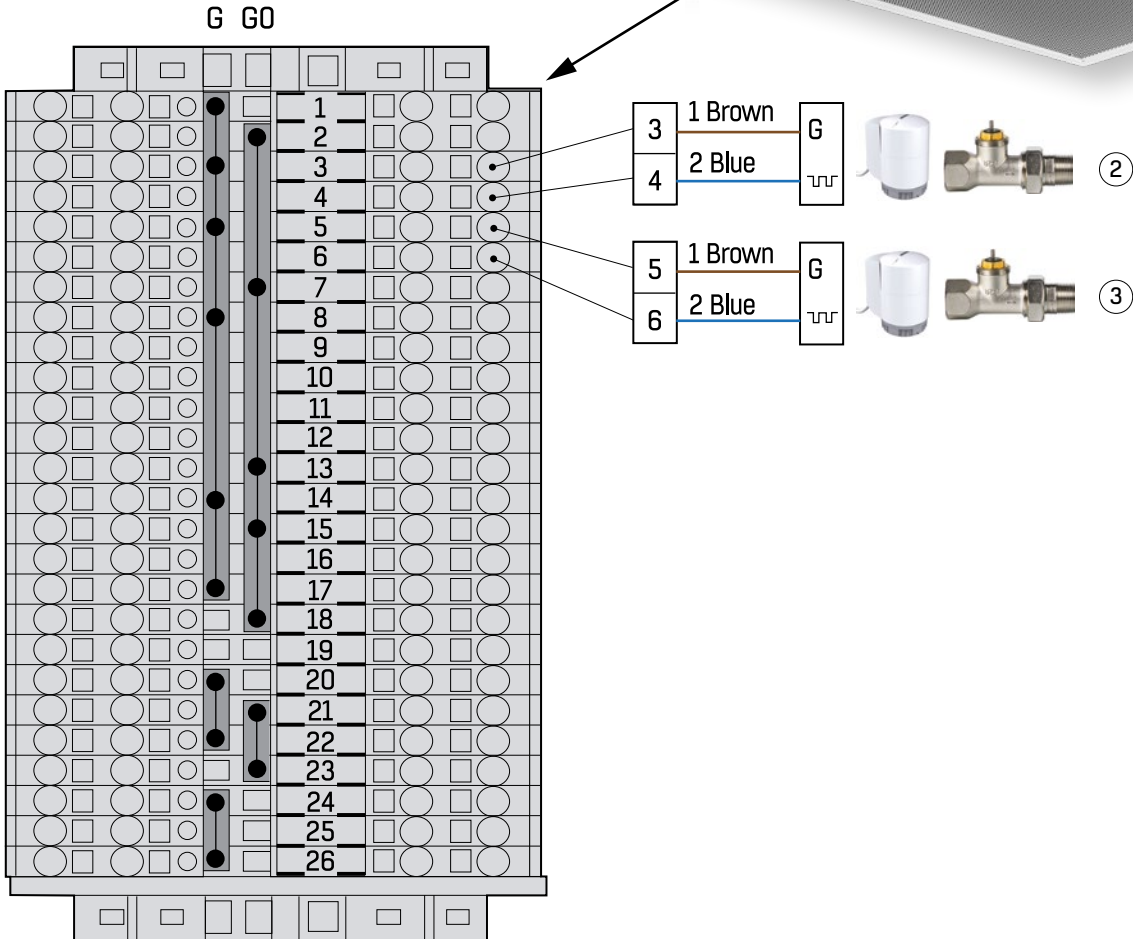
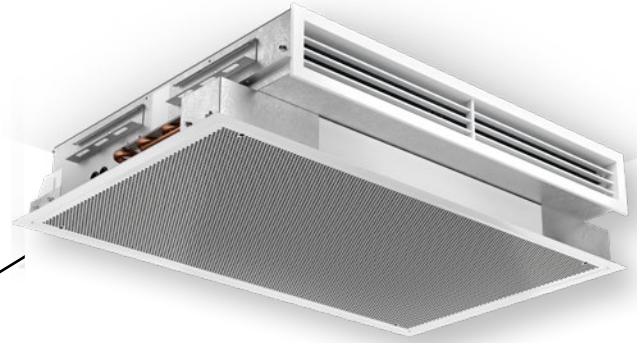
## MASTER BEAM



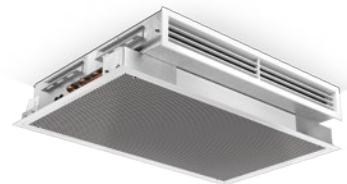
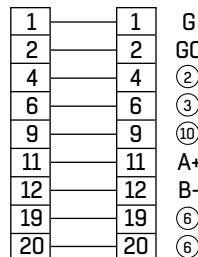
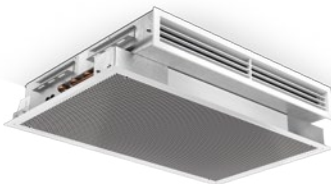
	1	2	3	4	5	6	7	8	9
GB	Transformer	Actuator heating	Actuator cooling	Exhaust actuator	CO <sub>2</sub> sensor	Occupancy sensor/ PIR sensor	Window sensor	Condense sensor	Temperature sensor
SE	Transformator	Ventil värme	Ventil kyla	VAV-spjäll	CO <sub>2</sub> -givare	Närvarogivare/ PIR sensor	Fönsterkontakt	Kondensgivare	Temperaturgivare
FI	Muuntaja	Toimilaitteen lämmitys	Toimilaitteen jäähdytys	Poistoilman toimilaitte	CO <sub>2</sub> -anturi	Läsnäoloanturi/ PIR-anturi	Ikkunakosketin	Kondensianturi	Lämpötila-anturi
DK	Transformer	Aktuator, opvarmning	Aktuator, køling	Afkastaktuator	CO <sub>2</sub> -sensor	Bevægelsessensor/ PIR-sensor	Vinduessensor	Kondenssensor	Temperatursensor
DE	Transformator	Stellglied Heizung	Stellglied Kühlung	Fortluftstellglied	CO <sub>2</sub> -Sensor	Anwesenheitssensor/ PIR-Sensor	Fenstersensor	Kondensations- sensor	Temperaturfühler
NL	Transformator	Actuator verwarming	Actuatorkoeling	Exhaust actuator	CO <sub>2</sub> sensor	Aanwezigheidsdetector/ PIR-sensor	Raamsensor	Condensatiesensor	Temperatuursensor
FR	Transformateur	Servomoteur chauffage	Servomoteur refroidissement	Servomoteur air extrait	Sonde CO <sub>2</sub>	Capteur de présence/ Sonde PIR	Capteur de fenêtre	Sonde de condensation	Sonde de température
IT	Trasformatore	Attuatore di riscaldamento	Attuatore di raffreddamento	Attuatore di scarico	Sensore di CO <sub>2</sub>	Rilevatore di presenza/ Sensore PIR	Contatto finestra	Sensore di condensa	Sensore di temperatura
PL	Transformator	Siłownik grzanie	Siłownik chłodzenie	Siłownik pow. wylot.	Sensor CO <sub>2</sub>	Czujnik obecności/Czu- jnik PIR	Czujnik otw. okna	Czujnik skraplania	Czujnik temperatury
CZ	Napájení - Transformátor	Servopohon ventilu - Topení	Servopohon ventilu - Chlazení	Servopohon klapky	Čidlo CO <sub>2</sub>	Detektor pohybu/Čidlo PIR	Dveřní kontakt	Čidlo kondenzace	Čidlo prostorové teploty
RU	Трансформатор	Привод обогрева	Привод охлаждения	Привод удаляемого воздуха	Датчик CO <sub>2</sub>	Датчик присутствия/ Пассивный инфракрасный датчик	Датчик окна	Датчик конденсации	Датчик температуры
LT	Transformators	Aktuatora apsilde	Aktuatora dzesēšana	Izplūdes aktuators	CO <sub>2</sub> Sensors	Judesio jutiklis/ PIR sensors	Loga sensors	Kondensēšanas sensors	Temperatūras sensors
LV	Transformatorius	Šildymo pavara	Šaldymo pavara	Šalinamo oro pavara	CO <sub>2</sub> Jutiklis	Klātbūtnes detektors/ PIR jutiklis	Lango jutiklis	Kondensato jutiklis	Temperatūros jutiklis

**STRZ-76**

**SLAVE BEAM**



Slave → Slave beam  
Master → Slave beam



10

- GB Supply air actuator
- SE Tilluftsställdon
- FI Tuloilman toimilaite
- DK Tilluftaktuator
- DE Zuluftstellglied
- NL Toevoerluchtaandrijving
- FR Servomoteur air neuf

10

- IT Attuatore dell'aria di mandata
- PL Siłownik pow. wlot.
- CZ Servopohon klapky přiváděného vzduchu
- RU Привод приточного воздуха
- LT Tiekiamo oro pavara
- LV Tiekimo oro paleidklis

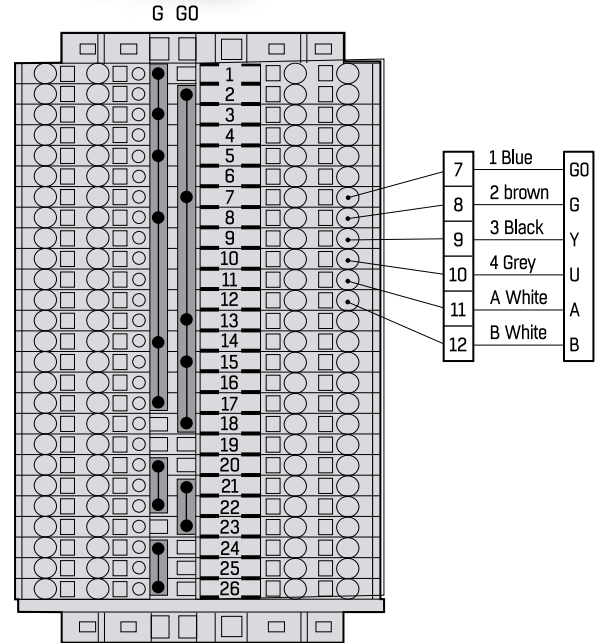
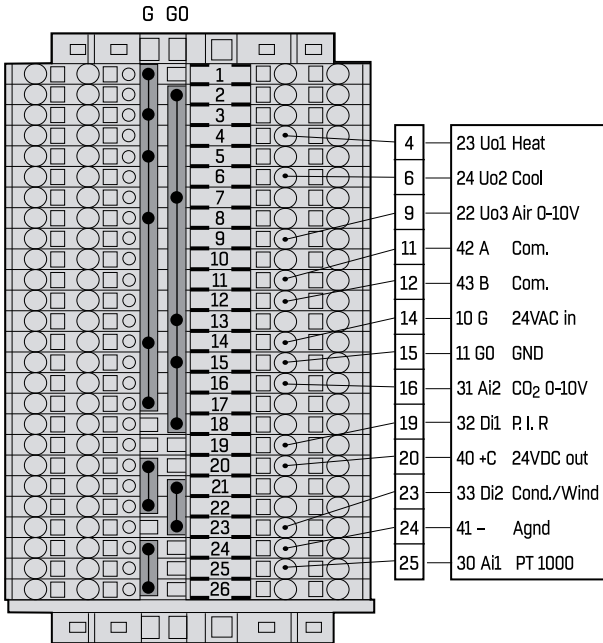
**STRZ-76**



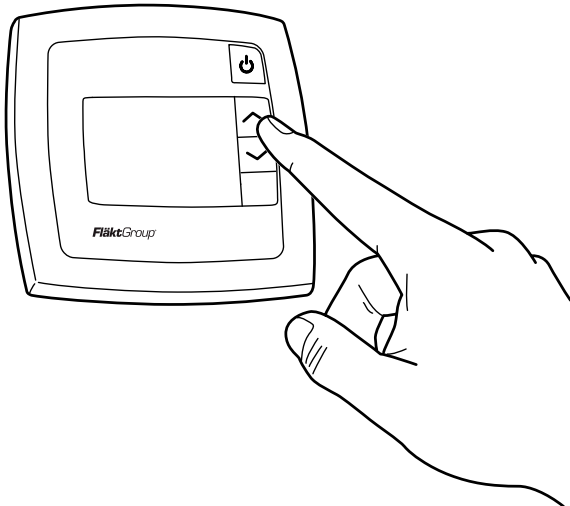
**Control unit STRA**



**Pi actuator**



**STRZ-76**

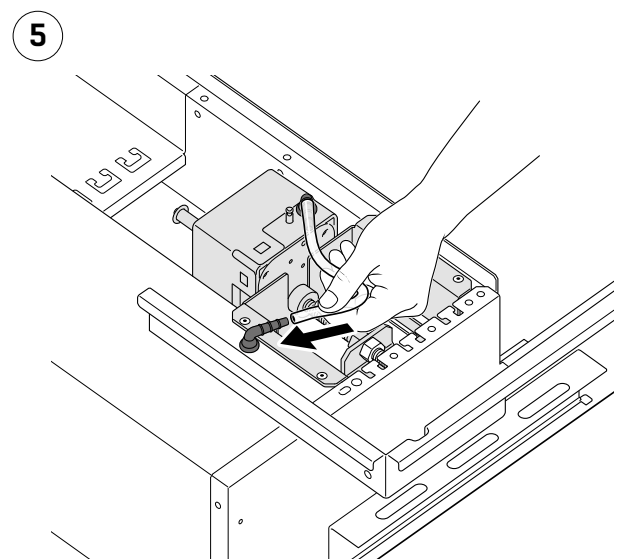
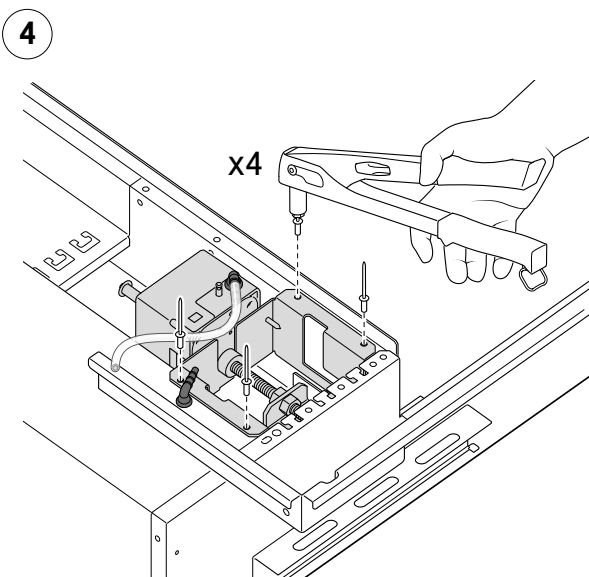
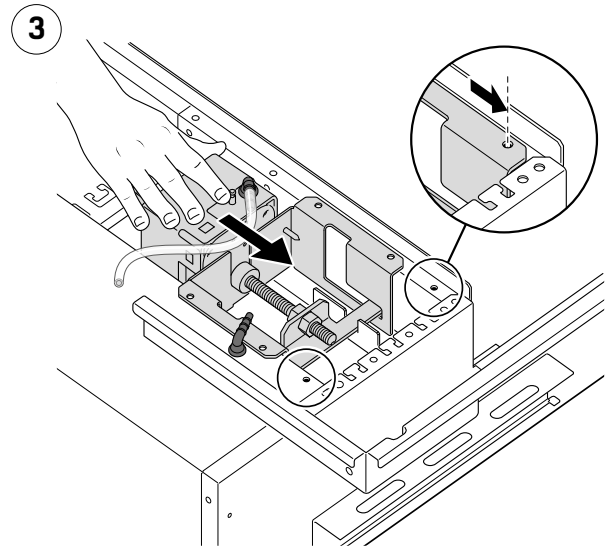
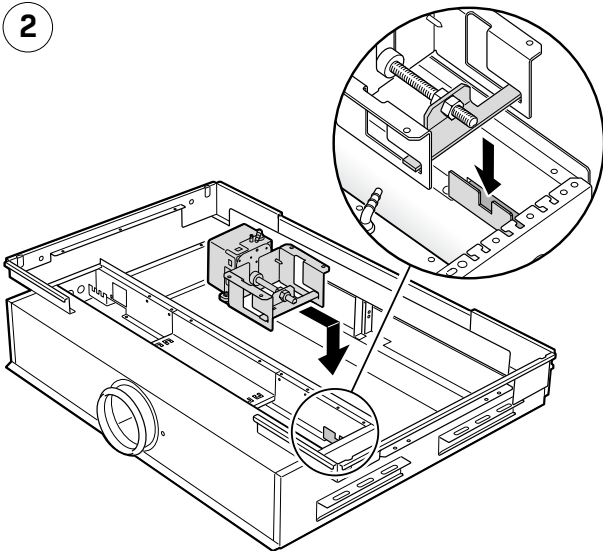
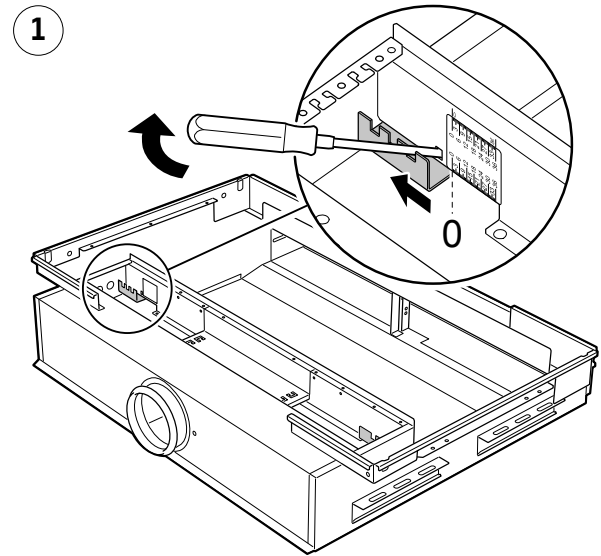


STRZ-76-00/01-02/06-d-08

Parameter 18 = 2

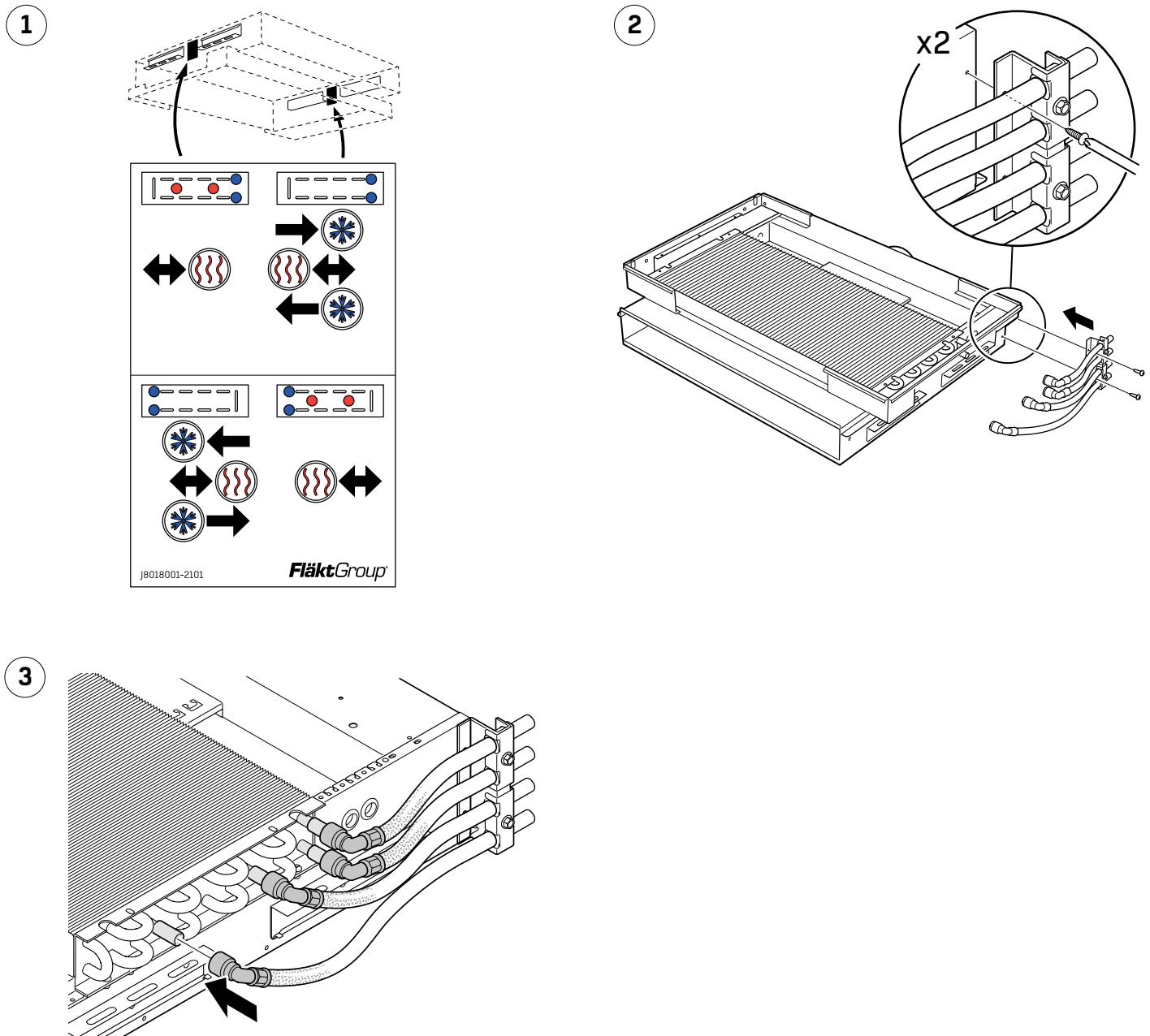
## IQAZ-35-05

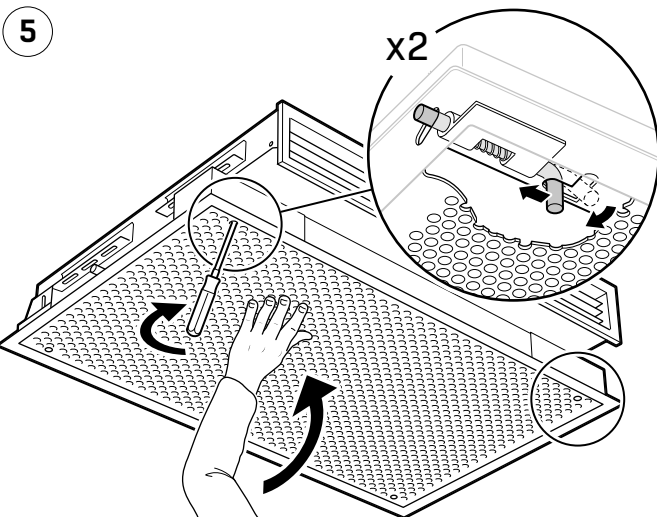
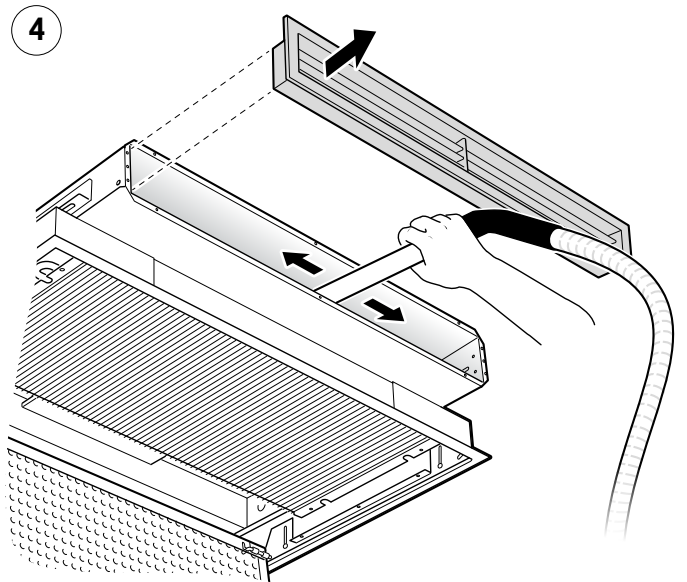
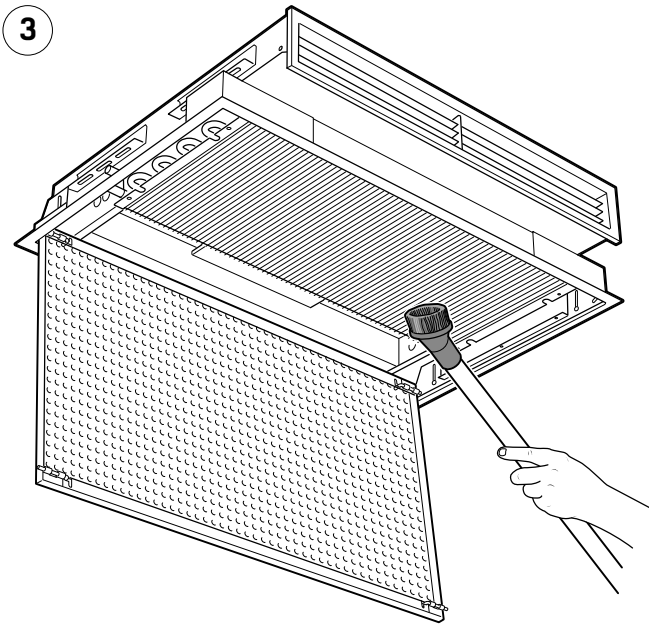
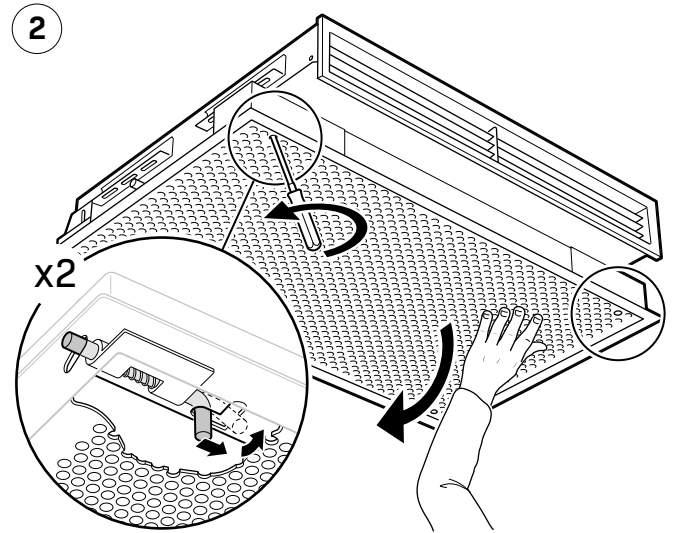
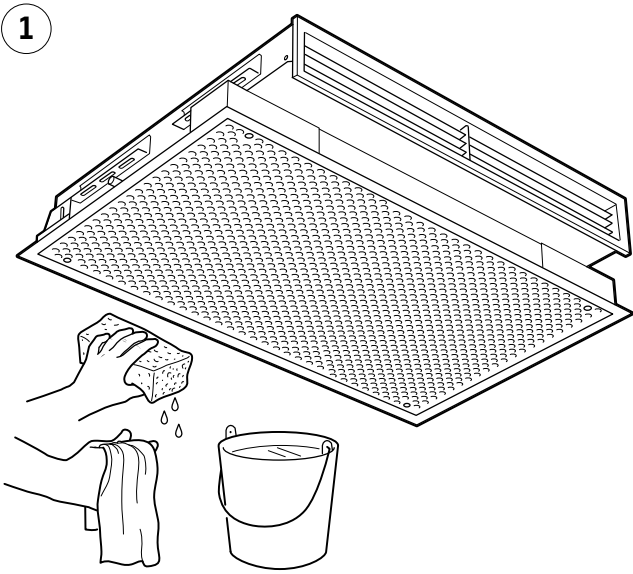
- GB RETROFITTING INTERNAL DAMPER MOTOR
- SE INSTALLATION I EFTERHAND AV INTERN SPJÄLLMOTOR
- FI SISÄISEN PELTIMOOTTORIN JÄLKIASENNUS
- DK EFTERFØLGENDE INSTALLATION AF INTERN SPJÆLDMOTOR
- DE NACHRÜSTUNG EINES INTERNEN KLAPPENMOTORS
- NL MONTAGE ACHTERAF VAN INTERNE KLEPMOTOR
- FR MONTAGE A POSTERIORI DU MOTEUR DE VOLET INTERNE
- IT INSTALLAZIONE SUCCESSIVA DEL MOTORINO INTERNO DELLA SERRANDA
- PL INSTALACJA SILNIKA PRZEPUSTNICZY WEWNĘTRZNEJ
- CZ VÝMĚNNA MOTORU VNITŘNÍHO REGULÁTORU
- RU МОНТАЖ ОПЦИОННОГО ВНУТРЕННЕГО ПРИВОДА КЛАПАНА
- LT VIDINĖS SKLENDĖS MOTORO ĮMONTAVIMAS
- LV IEKŠĒJĀ AMORTIZATORA MODERNIZĒŠANA



**IQAZ-37-bb-2-1**

- GB RETROFITTING FLEXIBLE HOSES
- SE INSTALLATION I EFTERHAND AV FLEXIBLA SLANGAR
- FI JOUSTAVIEN LETKUJEN JÄLKIASENNUS
- DK EFTERMONTERING AF FLEKSIBLE SLANGER
- DE NACHRÜSTUNG FLEXIBLER SCHLÄUCHE
- NL MONTAGE ACHTERAF VAN FLEXIBELE SLANGEN
- FR MONTAGE À POSTERIORI DES TUYAUX FLEXIBLES
- IT INSTALLAZIONE SUCCESSIVA DEI FLESSIBILI
- PL INSTALACJA WĘŻY ELASTYCZNYCH
- CZ DODATEČNÁ MONTÁŽ PRUŽNÝCH HADIC
- RU МОНТАЖ ОПЦИОННЫХ ШЛАНГОВ
- LT LANKSČIŲ ŽARNŲ MODERNIZAVIMAS
- LV ELASTĪGO ŠĻŪTEŅU MODERNIZĒŠANA









## EXCELLENCE IN SOLUTIONS

FläktGroup is the European market leader for smart and energy efficient Indoor Air and Critical Air solutions to support every application area. We offer our customers innovative technologies, high quality and outstanding performance supported by more than a century of accumulated industry experience. The widest product range in the market, and strong market presence in 65 countries worldwide, guarantee that we are always by your side, ready to deliver Excellence in Solutions.

### PRODUCT FUNCTIONS BY FLÄKTGROUP

Air Treatment | Air Movement | Air Diffusion | Air Distribution | Air Filtration  
Air Management & ATD's | Air Conditioning & Heating | Controls | Service

» Learn more on [www.flaktgroup.com](http://www.flaktgroup.com)  
or contact one of our offices